

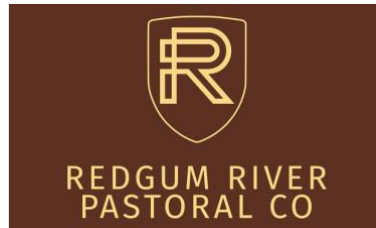


AUSTRALIAN MERINO
Production Trial
EST. 2004

2025 - 2027
AUSTRALIAN MERINO
PRODUCTION TRIAL

2026 WOOL REPORT

www.australianmerinoproductiontrial.com



Redgum River Pastoral Co
Craig Wilson, Managing Director
M: 0428 250 982
E: craigwilsonlivestock@bigpond.com

Report Authors

Sally Martin, SheepMetriX, Young NSW
M: 0400 782 477
E: sally@sheepmetrix.com.au

Gordon Refshauge, SheepMetriX, Cowra, NSW
M: 0439 607 842
E: gordon@sheepmetrix.com.au

Acknowledgements

Farron Fletcher, Fletcher International Exports, Dubbo NSW
Troy & Liz Cruikshank, Fletcher International Exports, Dubbo NSW
Sally Martin, SheepMetriX, Young NSW
Marty Moses, Moses & Son, Temora NSW
Mitch Rubie, Rubie Livestock Advancement, Forbes NSW
Trent Fordham, Riverina Wool Testers, Wagga Wagga NSW
Jim Meckiff, JM Livestock, Wagga Wagga NSW
Geoff Casburn, NSW Department of Agriculture, Wagga Wagga, NSW

Photos: Redgum River Pastoral Co

Date of publication: June 2026

Ownership of Intellectual Property Rights

Unless otherwise noted, copyright (and any other intellectual property rights) in this publication is owned by Redgum River Pastoral Co. All rights reserved. This work is copyright. Except as permitted under the Copyright Act 1968, no part of this publication may be reproduced by any process, electronic or otherwise, without the specific permission of the copyright owners. Neither may information be stored electronically in any form whatsoever without permission.

Disclaimer

Redgum River Pastoral Co has exercised due care and skill in preparing and compiling the information and data in this publication. This publication has been compiled from independent service providers and expert representatives in the sheep industry. The information contained in this publication is based on knowledge and understanding at the time of publishing (May 2026). However, because of advances in knowledge, users are reminded of the need to ensure that information upon which they rely is up to date and to check currency of the information with an appropriate adviser. The product trade names in this publication are supplied on the understanding that no preference between equivalent products is intended and that the inclusion of a product name does not imply endorsement by Redgum River Pastoral Co or Sally Martin Consulting Pty Ltd trading as SheepMetriX over any equivalent product from another.

1 Foreword

The Australian Merino Production Trial (AMPT) continues to provide an important platform for independently benchmarking Merino genetics across a diverse range of production environments and commercial systems throughout Australia. The 2025–2027 AMPT represents another significant step forward in delivering meaningful, commercially relevant data to sheep producers, ram breeders, processors and industry stakeholders.

Recognised as Australia’s largest independent evaluation of Merino genetics, the AMPT brings together leading commercial producers from across the nation to measure the traits that directly influence enterprise profitability. Through independently collected and analysed data, the trial provides valuable insight into wool production, carcass performance, efficiency and overall sheep value under commercial conditions.

The results presented within this report reflect the commitment of 74 entrant teams from across every State in Australia. Their willingness to participate in transparent benchmarking demonstrates the progressive mindset that continues to drive genetic improvement within the Australian sheep industry.

The AMPT would not be possible without the collaboration and support of numerous industry partners, service providers and sponsors. We sincerely thank Fletcher International Exports for their continued commitment to innovation and industry advancement, including their support of the Condobolin trial site and processing components of the project.

We sincerely thank Moses & Son for their ongoing support of the Australian Merino Production Trial. Their commitment to the Australian sheep and wool industry, together with their strong support of independent benchmarking has played an important role in the success of the AMPT. The contribution and professionalism of the Moses & Son team is greatly appreciated by all involved in the trial.

We also acknowledge SheepMetriX for producing this report, JM Livestock, Rubie Livestock Advancement, Riverina Wool Testers, Wool Solutions and all contractors and advisors who contributed their time, resources and knowledge throughout the trial.

We extend our sincere appreciation to the Lamont family of Koorngal Horse Stud for generously hosting the AMPT shearing evaluations and providing outstanding facilities.

I encourage you to click on the link on the following page to view a short video showcasing the Australian Merino Production Trial and the people, sheep and industry collaboration behind the program.

Finally, we thank the broader sheep industry for its ongoing interest and support of independent benchmarking initiatives. The continued strength of the AMPT reflects the industry’s shared commitment to objective measurement, informed decision-making and the pursuit of improved productivity and profitability across the Australian Merino sector.

Craig Wilson
Managing Director
Redgum River Pastoral Co.

AUSTRALIAN MERINO

Production Trial

EST. 2004



YouTube

Click here

2026 Shearing
10th - 12th March, 2026
'Glenmoira'
Harefield, NSW

The Australian Merino Production Trial
is proudly supported by



www.australianmerinoproductiontrial.com

Table of Contents

1	Foreword.....	2
	Table of Contents	5
2	Introduction and trial structure	7
	<i>Table 1: Number of teams represented by State.....</i>	<i>7</i>
	<i>Table 2: Traits measured in the Australian Merino Production Trial (AMPT)</i>	<i>8</i>
3	Understanding this report.....	9
3.1	Correlations.....	9
3.2	Micron Premium	9
	<i>Table 3 – 5-year micron premiums (2025)</i>	<i>9</i>
	<i>Figure 2 – Micron premiums for the 5-year average (2025).....</i>	<i>9</i>
4	AMPT Entrants (2025-2027)	14
	<i>Table 4 – List of entrants, team trial location, bloodline and estimated birth date.</i>	<i>14</i>
5	AMPT 2026 Results Summary Tables.....	17
	<i>Table 5a – Autumn drop 2026 shearing averages</i>	<i>17</i>
	<i>Table 5b – Autumn drop 2026 shearing deviations</i>	<i>17</i>
	<i>Table 6a – Winter drop 2026 shearing averages</i>	<i>18</i>
	<i>Table 6b – Winter drop 2026 shearing deviations</i>	<i>19</i>
	<i>Table 7a – Spring drop 2026 shearing averages</i>	<i>21</i>
	<i>Table 7b – Spring drop 2026 shearing deviations</i>	<i>22</i>
6	AMPT 2026 Results Summary Graphs	25
6.1	Autumn Drop	25
	<i>Figure 3 – Autumn drop 2026 Clean Wool Weight relative to Fibre Diameter</i>	<i>25</i>
	<i>Figure 4 – Autumn drop 2026 Wool Value relative to Meat Value</i>	<i>25</i>
6.2	Winter Drop	26
	<i>Figure 5 – Winter drop 2026 Clean Wool Weight relative to Fibre Diameter</i>	<i>26</i>
	<i>Figure 6 – Winter drop 2026 Wool Value relative to Meat Value</i>	<i>26</i>
6.3	Spring Drop	27
	<i>Figure 7 – Spring drop 2026 Clean Wool Weight relative to Fibre Diameter.....</i>	<i>27</i>
	<i>Figure 8 – Spring drop 2026 Wool Value relative to Meat Value</i>	<i>27</i>
7	Trial Site Location Comparisons.....	28
7.1	How do the link teams rank across Temora and Condobolin?.....	28
	<i>Table 8: AMPT Shearing Results (Spring Drop) – Comparison Across Environments – Ranking Summary</i>	<i>28</i>
	<i>Figure 9 – Spring Drop Link Teams Ranked Across Sites – Total Fleece Value.....</i>	<i>29</i>
	<i>Figure 10 – Spring Drop Link Teams Ranked Across Sites – Total Sheep Value Adjusted for DSE</i>	<i>29</i>
7.2	Comparison between the Wool and Meat Trial Wethers.....	30
	<i>Figure 11 – Wool and Meat Trial Comparison – Body Weight (kg).....</i>	<i>30</i>

<i>Figure 12 – Wool and Meat Trial Comparison – Staple Length (mm)</i>	30
<i>Figure 13 – Wool and Meat Trial Comparison – Micron (um)</i>	31
7.2.1 Fibre Diameter distribution across sites	32
7.2.2 Clean Wool Weight distribution across sites.....	33
7.2.3 Total Fleece Value (TFV) distribution across sites	34
7.2.4 Estimated Carcase Value distribution across sites	35
7.2.5 Total Sheep Value (TSV) distribution across sites.....	36
7.2.6 Total Sheep Value per Dry Sheep Equivalent (TSV DSE) distribution across sites.....	37
7.3 Basic Scatterplots comparing site and traits	38
7.3.1 Fibre Diameter and Clean Wool Weight (Individual)	38
7.3.2 Estimated Carcase Value and Clean Wool Weight (Individual)	39
7.4 Rank of teams across sites, Adjusted for site and age group	40
7.4.1 Total Sheep Value per head for each Team, adjusted for site and age group	40
7.4.2 Total Sheep Value per DSE for each Team, Adjusted for site and age group	41

2 Introduction and trial structure

Wether trials have been a part of the genetic benchmarking landscape for over 40 years. They play an important role benchmarking commercial breeding flocks and ram source (bloodline) performance across a range of environments and seasons.

The aim of the Australian Merino Production Trial (AMPT) for the 2025-2027 is to compare the meat and wool production traits for the entrants. The 2025-2027 Australian Merino Production Trial (AMPT) complements other trials run under a similar format. Since 2010, **435** teams have been evaluated from 6 states around Australia, Table 1 shows the distribution of teams and Figure 1 shows the current spread of teams entered in the 2025-2027 AMPT. The 2025-2027 AMPT has common team links to past trials, enabling the full dataset to be compared over time.

Selection of wethers for the AMPT involves an AMPT representative randomly drafting 54 weaners, from the 54 weaners, 30 are then selected and tagged with a permanent electronic and visual tag. The selected wethers were then transported to Temora for the induction process in April 2025. An additional 15 wethers were provided by 9 Entrants to facilitate linkage between the two Wool Trial Sites located at Temora and Condobolin.

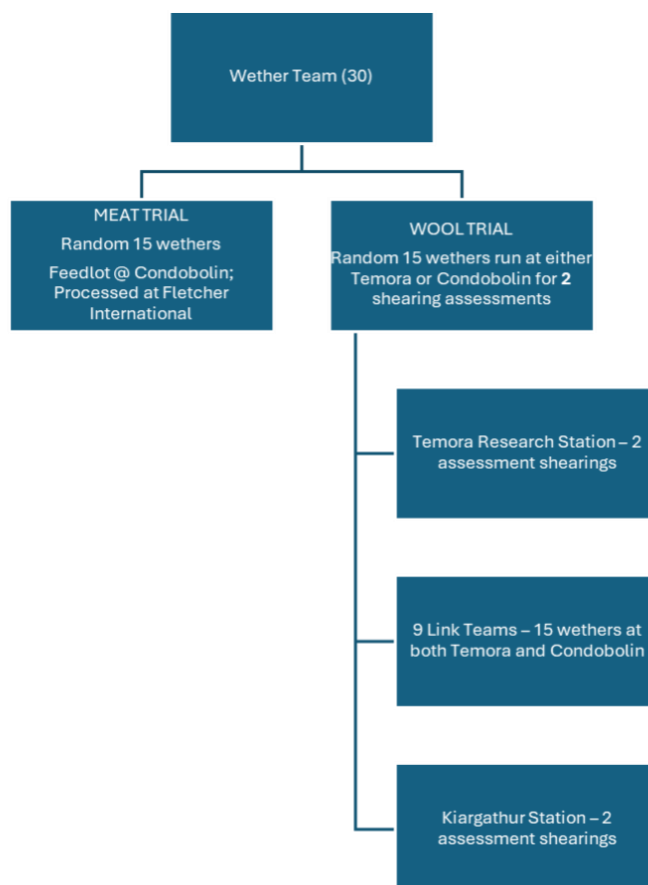
The current AMPT (2025-2027) started in April 2025 when the 2024 drop wethers were inducted and shorn to a standardised wool length (even up shearing). Post the even up shearing half of each wether team (15) were trucked to Fletcher International Feedlot near Condobolin, these wethers were processed through Fletcher International abattoir in August 2025 with the results reported to entrants on the carcass traits measured.

The remaining wethers, “Wool Trial”, are being run across two (2) locations, one at the Temora Research Station and the second at Kiargathur Station, Condobolin. This report focusses on the outcome of the “Wool Trial” wethers. The Wool wethers had their first shearing assessment over 3 days, 10th to 13th March 2026. All Wool Trial wethers were mid side sampled 4 weeks prior to shearing. Data capture pre and during shearing included micron, yield, staple length, skirted greasy fleece weights, pieces and belly weights, an AWEX identification and bin line. Table 2 shows the list of traits measured and reported in this report.

NOTE: Not all entrants had a team in the feedlot, refer to Table 4 for more details relating to the team splits between trial and locations, page 12.

Table 1: Number of teams represented by State

States	2010-12	2012-14	2014-16	2016-18	2018-20	2020	2021-23	2023-25	2025-27	Total
NSW	45	50	46	43	34	23	29	44	60	374
VIC	4	7	3	4	5	3	5	1	3	35
WA	1		1	2	1				1	6
SA		2							3	5
TAS		1		1			1	5	6	14
QLD									1	1
Total	50	60	50	50	40	26	35	50	74	435



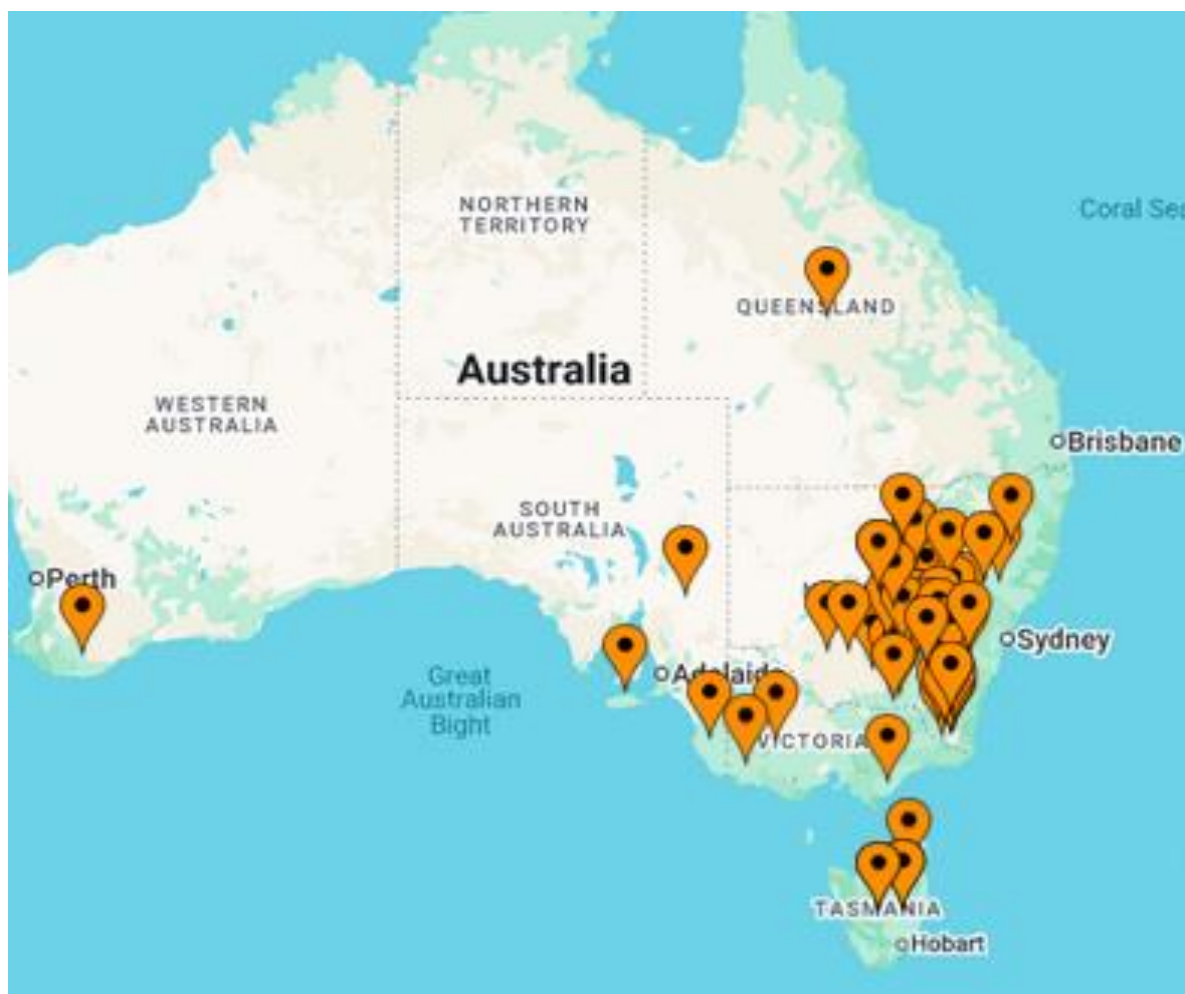


Figure 1 – 2025-2027 Entrant Location

Table 2: Traits measured in the Australian Merino Production Trial (AMPT)

Abbreviation	Trait description
FD	Fibre Diameter (um) – mid side
FDCV	Coefficient of Variation of Fibre Diameter
FSD	Standard Deviation of Fibre Diameter
Sch Yld	Schlumberger Yield (%)
GFW	Greasy Fleece Weight (kg)
GWW	Greasy Wool Weight (kg) = fleece + pieces+ bellies
CFW	Clean Fleece Weight (kg)
CWW	Clean Wool Weight (kg) = fleece + pieces+ bellies
SL	Staple Length - mm
SS	Staple Strength – Sound, W1, W2, W3
Bin Line	Bin Line (AAAM; AAAE; AAAC)
AWEXID	AWEX Identification – Style MF4; MF5; MF6
COL	Wool Colour – Nil, H1; H2; H3
TFV	Total Fleece Value – including fleece + skirtings based on 5 year wool prices.
CWTV	Carcase Value (mutton value) – 5 year average mutton price
TSV	Total Sheep Value = Total Fleece + Carcase Values
Adj LWT	Adjusted Liveweight = Pre Shearing Liveweight – Greasy wool weight
DSE	Dry Sheep Equivalent = Adj LWT / 50 kg
TSV DSE	Total Sheep Value per dry sheep equivalent

3 Understanding this report

The data presented in this report has been prepared for entrants to discover the variation that exists within their team. The report is a snapshot of the wool productivity drivers. Mutton values have been calculated to simulate selling the wethers post shearing. There will be some changes to the final results presented in this report from the preliminary results that were available at the shearing due to link team and site adjustments. **A key metric to look at in this report is the Total Sheep Value / Dry Sheep Equivalent (TSV DSE)**, This provides an indication of efficiency that can be compared across environments and stocking rates.

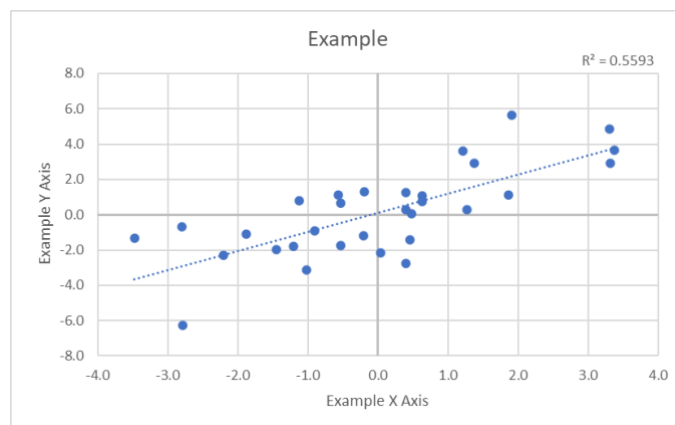
All the wethers were mid-side sampled 4 weeks prior to shearing and the micron and yield have been used to generate the fleece values. A more detailed description on how each team's fleece are valued is included and presented in [Section 7](#). The wool valuation using the 5 year rolling average price is conducted at the time of shearing to enable entrants to have real time information available, all additional calculations are done post shearing.

Due to the variation in age between the teams (up to 6 months) the first year's shearing results (2026) are presented in their age groups (birth season). The main reason for this is because 80% of the variation up to 200 days of age can be associated with early life influences such as date of birth, birth and rear type. In next year's report (2027) all teams will be reported together for their adult stage. Each entrant's individual team results for both sites are presented in [Section 7](#).

3.1 Correlations

Correlation is a statistical measure that expresses the extent to which two variables are linearly related and describes the relationship between the variables. We have referred to correlations within this report.

As a rule a very high correlation would be between 0.9 and 1.0; high correlation would be between 0.7 and 0.89; moderate correlation would be between 0.5 and 0.69; low correlation would be between 0.3 and 0.49 and little or insignificant correlation would be between 0.0 and 0.29. Often when you see a graph with a trendline, and R squared figure as shown in the example below. To convert an R² figure to a correlation you need the square root. For example, R² = 0.5593; the square root would be 0.75; to interpret the correlation we would say that there is a high correlation between the X and Y Axis in the example below.



3.2 Micron Premium

The AMPT wool and mutton values are calculated using 5 year rolling average prices, data sourced from AWEX and MLA respectively. The micron premium is the measure of the wool markets relative value of fleece weight and fibre diameter. Micron premium is the percentage increase in price/kg for wool one micron finer. For example, the 18 micron premium is the value of 18 µm relative to 19 µm wool, in 2024 this was 13.9%. Table 3 and Figure 2 present the 5-year premiums.

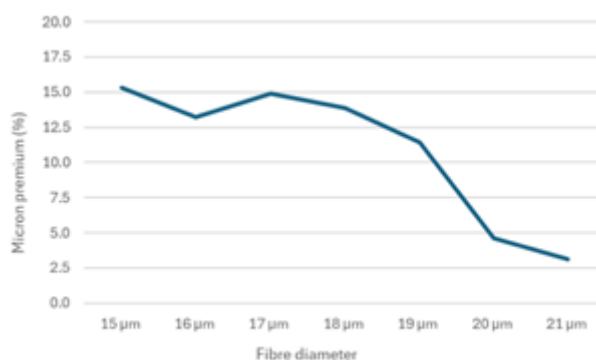


Table 3 – 5-year micron premiums (2025)

Micron	Micron Premium 5-year average (%)
15 µm	15.3
16 µm	13.2
17 µm	14.9
18 µm	13.9
19 µm	11.4
20 µm	4.6
21 µm	3.1

Figure 2 – Micron premiums for the 5-year average (2025)



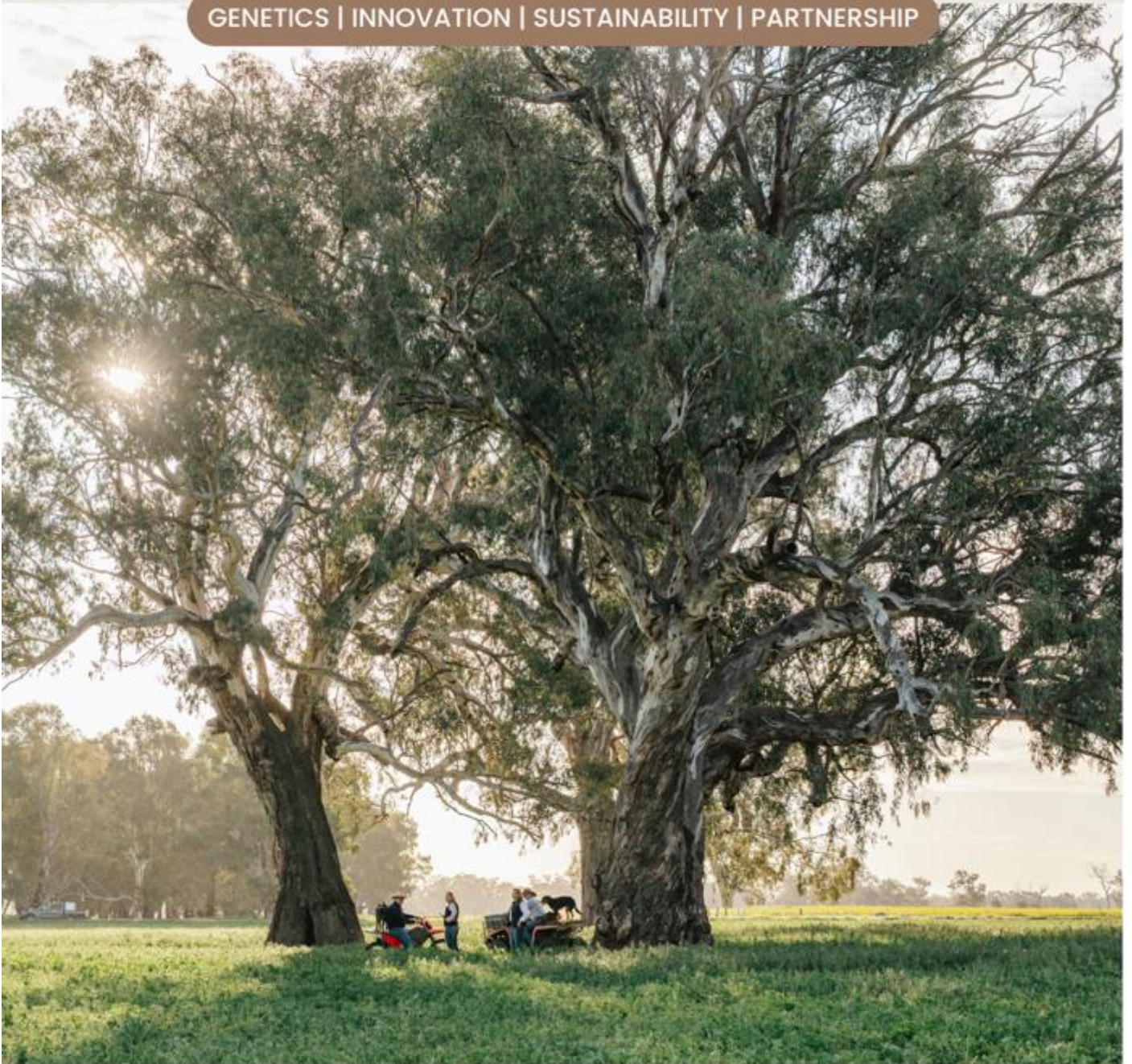




REDGUM RIVER PASTORAL CO

Proudly supporting the
Australian Merino Production Trial

GENETICS | INNOVATION | SUSTAINABILITY | PARTNERSHIP



Wagga Wagga NSW

Craig Wilson M: 0428 250 982 | Karen Wilson M: 0428 089 009

www.redgumriverpastoral.com

MOSES & SON



Innovative Wool Marketing, Traditional Services



Proudly Supporting Local Communities

Temora Wagga Wagga Narrandera West Wyalong Condoblin Young Grenfell

02 6977 3100 www.mosesandson.com.au

4 AMPT Entrants (2025-2027)

Table 4 – List of entrants, team trial location, bloodline and estimated birth date.

Team	Feedlot	Condobolin	Temora	Bloodline	Est. date of birth
1	15		15	Paling Yards & Grassy Creek	15/09/2024
2 (Link)		15	15	Hazeldean	14/07/2024
3	15	30		Hazeldean	14/05/2024
4 (Link)		15	15	Yalgoo	25/09/2024
5 (Link)		30	15	Greendale	15/09/2024
6	15		15	Paling Yards /Hazeldean	15/09/2024
7	15	15		Collingwood	4/07/2024
8 (Link)		15	15	Greendale	15/09/2024
9	15	30		Kiargathur Station	15/08/2024
10 (Link)		30	15	Jimenbuen	1/09/2024
11 (Link)		15	15	Greendale / Hazeldean	5/09/2024
13	15	15		Grassy Creek	9/09/2024
14	15	15		Mixed	15/09/2024
15	15	15		Wallaloo Park	25/08/2024
16	15		15	Grassy Creek	15/08/2024
17	15		15	Greendale	15/08/2024
18 (Link)	15	15	15	Woodpark Poll	29/05/2024
19	15	15		Woodpark Poll	15/08/2024
20			15	Billandri	15/08/2024
21	15		15	Woodpark Poll	4/07/2024
22	15	15		Mixed	3/07/2024
23	15	15		Pastora	2/07/2024
24	15	15		Greenland	15/05/2024
25	15	15		Pastora	4/08/2024
26	15	15		Pastora	29/06/2024

Team	Feedlot	Condobolin	Temora	Bloodline	Est. date of birth
27	15	15		SRS	24/07/2024
28	15	15		Hazeldean	4/09/2024
29	15	15		Tallawong	24/07/2024
31	15	15		Poll Boonoke / Willandra	4/09/2024
32	15	15		Yalgoo	25/04/2024
33	15	15		Egelabra/Langdene	12/08/2024
34	15	15		Dunbogan	29/04/2024
35	15	15		Mixed	30/08/2024
36	15	15		Yarrowonga	15/08/2024
37	15	15		McBride Stud	2/07/2024
38	15	15		Faraway Hill	15/07/2024
39	15	15		Mixed	15/07/2024
40	15		15	Roseville Park/Glenlea Park	28/08/2024
41	15		15	Dt Kenilworth	29/08/2024
42	15		15	Yalgoo	12/10/2024
43	15		15	Ella Matta/ Anderson	15/09/2024
44	15		15	Beaufront	4/09/2024
45	15		15	Nerstane	29/09/2024
46	15	15		Mixed	15/08/2024
47	15	15		Richmond Merinos	29/08/2024
48	15	15		Inglewood Merinos	15/08/2024
49	15	15		Kerin Poll	29/04/2024
50	15	15		Adina	25/09/2024
51	15	15		Roseville Park	29/09/2024
52	15	15		Own	14/09/2024
53	15	15		Lachlan	16/07/2024
54	15	15		Pastora	24/07/2024
55	15	15		Koonwarra	16/09/2024

Team	Feedlot	Condobolin	Temora	Bloodline	Est. date of birth
56	15	15		Hazeldean	15/08/2024
57	15	15		Bellevue	8/09/2024
59	15	15		Roseville Corriedale	9/08/2024
60	15	15		Yarrowonga	21/07/2024
61	15	15		GRASS	9/08/2024
62	15	15		Pastora	29/08/2024
63	15	15		Pooginook	1/06/2024
64	15	15		Greendale	15/06/2024
66	15	15		Borambil	27/04/2024
67	15	15		Greenland	9/08/2024
68	15	15		Ridgeway Advance	15/08/2024
69	15	15		Egelabra / Wanganella	7/06/2024
70	15	15		Mixed	4/08/2024
71	15	15		Bundilla	15/09/2024
73	15	15		Bundilla / Poll Boonoke	4/07/2024
74	15	15		Bullenbung	25/06/2024
75	15	15		Hazeldean	15/07/2024
76	15		15	Pastora	15/08/2024
77	15	15		Nanena	29/08/2024
78	15	15		Bundilla	1/05/2024
79	15	15		Haddon Rig	4/09/2024

5 AMPT 2026 Results Summary Tables

The 2026 shearing results are presented in age groups – Autumn, Winter and Spring – to best reflect the spread of lambing times of the entrants. Tables 5a and 5b present the team averages and deviations for the Autumn drop wethers. The Winter drop teams are presented in Tables 6a and 6b, with the Spring drop teams presented in Tables 7a and 7b.

Table 5a – Autumn drop 2026 shearing averages

Team	FD	GFW	Sch Yld	CFW	SD	CV	SL	GWW	CWW	Adj LWT	DSE	TFV	CWTV	TSV	TSV DSE
3	17.9	6.07	59	3.63	2.8	15	104	7.79	4.59	59.7	1.19	\$75.80	\$118.72	\$194.52	\$163.69
18	18.6	5.93	63	3.70	3.0	16	108	7.56	4.67	64.2	1.29	\$72.79	\$127.70	\$200.49	\$156.60
24	19.8	7.35	61	4.51	3.2	16	101	8.63	5.25	58.8	1.18	\$75.75	\$117.02	\$192.77	\$163.93
32	17.8	5.35	50	2.70	2.8	15	105	6.73	3.34	58.4	1.17	\$57.51	\$116.22	\$173.74	\$148.94
34	19.3	7.35	62	4.54	2.9	15	104	8.71	5.32	67.0	1.34	\$79.46	\$133.23	\$212.69	\$159.59
49	20.9	6.89	54	3.68	3.2	16	107	8.08	4.26	71.2	1.42	\$57.42	\$141.53	\$198.95	\$140.47
66	19.2	6.23	56	3.48	2.9	15	105	7.71	4.24	63.8	1.28	\$63.18	\$126.96	\$190.14	\$149.70
78	19.6	6.01	54	3.24	2.9	15	111	7.68	4.07	72.2	1.44	\$57.37	\$143.51	\$200.89	\$139.52
Average	19.1	6.40	57	3.68	3.0	15	106	7.86	4.47	64.4	1.29	\$67.41	\$128.11	\$195.52	\$152.81

Table 5b – Autumn drop 2026 shearing deviations

Team	FD	GFW	Sch Yld	CFW	SD	CV	SL	GWW	CWW	Adj LWT	DSE	TFV	CWTV	TSV	TSV DSE
3	-1.0	96%	1.1	99%	-0.2	-0.2	-2.0	100%	102%	93%	-0.08	\$7.14	\$-8.30	\$-1.15	\$9.48
18	-0.4	94%	4.7	101%	0.1	0.6	2.1	97%	104%	100%	0.01	\$4.13	\$0.68	\$4.81	\$2.39
24	0.8	117%	3.2	123%	0.3	0.8	-4.2	111%	117%	92%	-0.10	\$7.09	\$-10.00	\$-2.91	\$9.72
32	-1.2	85%	-7.8	74%	-0.2	0.0	-0.9	86%	74%	91%	-0.11	\$-11.15	\$-10.79	\$-21.94	\$-5.27
34	0.3	117%	3.6	124%	0.0	-0.3	-1.3	111%	118%	105%	0.06	\$10.80	\$6.22	\$17.02	\$5.38
49	1.9	109%	-4.4	100%	0.3	0.0	1.0	103%	95%	111%	0.14	\$-11.24	\$14.51	\$3.27	\$-13.74
66	0.3	99%	-1.9	95%	-0.1	-0.5	-0.5	99%	94%	100%	0.00	\$-5.48	\$-0.06	\$-5.54	\$-4.51
78	0.6	95%	-4.1	88%	-0.1	-0.9	5.5	98%	91%	113%	0.16	\$-11.29	\$16.50	\$5.21	\$-14.69
Average	19.1	6.40	57	3.68	3.0	15	106	7.86	4.47	64.4	1.29	\$67.41	\$128.11	\$195.52	\$152.81

Table 6a – Winter drop 2026 shearing averages

Team	FD	GFW	Sch Yld	CFW	SD	CV	SL	GWW	CWW	Adj LWT	DSE	TFV	CWTV	TSV	TSV DSE
2	17.5	5.68	58	3.25	2.9	16	104	7.16	4.07	59.8	1.20	\$73.04	\$118.91	\$191.95	\$161.12
7	18.1	6.51	56	3.65	2.9	16	107	7.69	4.26	60.1	1.20	\$70.15	\$119.50	\$189.65	\$158.35
9	19.6	7.04	59	4.13	3.2	16	109	8.43	4.89	66.0	1.32	\$70.64	\$131.33	\$201.97	\$153.77
16	17.0	5.06	65	3.30	2.7	16	105	6.52	4.25	61.1	1.22	\$79.02	\$121.51	\$200.54	\$164.72
17	16.7	4.85	63	3.08	2.9	17	102	6.21	3.94	53.5	1.07	\$74.44	\$106.38	\$180.82	\$169.98
19	17.5	6.49	56	3.62	2.7	15	106	7.81	4.29	63.8	1.28	\$77.35	\$126.97	\$204.32	\$160.45
21	17.9	4.85	61	2.99	3.1	17	101	6.28	3.86	61.5	1.23	\$65.57	\$122.37	\$187.94	\$152.96
22	19.2	6.80	57	3.88	3.0	16	105	8.34	4.69	66.8	1.34	\$70.52	\$132.92	\$203.44	\$152.72
23	17.8	6.88	60	4.14	2.9	16	103	8.05	4.80	61.5	1.23	\$83.87	\$122.41	\$206.28	\$168.31
25	17.2	7.68	58	4.46	3.0	18	105	9.38	5.37	62.5	1.25	\$98.60	\$124.34	\$222.95	\$178.57
26	18.3	7.03	56	4.00	3.1	17	107	8.19	4.61	61.3	1.23	\$74.13	\$122.01	\$196.13	\$161.02
27	18.9	5.79	55	3.21	2.9	15	114	7.21	3.94	65.7	1.32	\$60.87	\$130.72	\$191.59	\$146.04
29	17.0	6.57	61	4.03	2.6	16	106	7.89	4.78	55.8	1.12	\$89.55	\$110.91	\$200.46	\$180.55
33	19.8	7.33	61	4.48	3.2	16	107	8.53	5.16	62.0	1.24	\$73.42	\$123.41	\$196.83	\$158.98
36	18.7	6.99	55	3.85	3.0	16	104	8.56	4.65	59.4	1.19	\$73.18	\$118.09	\$191.27	\$161.54
37	17.9	6.68	53	3.50	2.8	15	105	7.91	4.09	57.6	1.15	\$70.77	\$114.62	\$185.38	\$161.38
38	20.2	6.43	53	3.45	3.5	17	103	7.63	4.04	56.3	1.13	\$56.51	\$112.05	\$168.56	\$150.62
39	18.8	5.23	50	2.63	2.9	16	105	6.56	3.24	62.8	1.26	\$49.24	\$124.86	\$174.10	\$138.80
46	18.1	5.89	55	3.23	2.8	15	106	7.03	3.81	55.7	1.11	\$63.86	\$110.74	\$174.60	\$156.96
48	18.9	6.81	56	3.82	3.0	16	103	8.16	4.52	52.9	1.06	\$69.12	\$105.18	\$174.30	\$165.10
53	19.7	8.19	60	4.93	3.1	16	106	9.84	5.85	64.6	1.29	\$84.00	\$128.46	\$212.46	\$164.90
54	17.7	7.56	58	4.37	2.9	16	106	9.02	5.15	61.5	1.23	\$89.90	\$122.42	\$212.31	\$173.54
56	17.0	6.15	53	3.26	2.7	16	108	7.46	3.90	53.4	1.07	\$72.37	\$106.27	\$178.64	\$168.14
59	23.5	5.51	49	2.70	4.4	19	104	6.88	3.31	69.4	1.39	\$43.05	\$138.01	\$181.06	\$130.86
60	17.9	7.54	59	4.46	2.8	16	110	9.10	5.32	60.5	1.21	\$91.51	\$120.35	\$211.86	\$176.94

Team	FD	GFW	Sch Yld	CFW	SD	CV	SL	GWW	CWW	Adj LWT	DSE	TFV	CWTV	TSV	TSV DSE
61	18.4	6.98	56	3.91	2.9	16	106	8.39	4.64	61.6	1.23	\$75.29	\$122.55	\$197.84	\$161.07
63	20.4	7.44	55	4.09	3.2	16	108	8.88	4.82	64.5	1.29	\$66.42	\$128.32	\$194.74	\$151.64
64	18.1	7.32	58	4.25	2.8	16	106	8.97	5.14	56.1	1.12	\$85.98	\$111.67	\$197.66	\$177.12
67	18.7	6.47	54	3.50	3.0	16	101	8.02	4.28	67.1	1.34	\$66.95	\$133.37	\$200.32	\$149.97
68	18.8	5.91	57	3.39	2.9	15	114	7.76	4.37	59.4	1.19	\$66.35	\$118.25	\$184.59	\$156.66
69	20.0	6.42	56	3.59	3.3	16	106	7.52	4.16	59.8	1.20	\$58.37	\$119.04	\$177.41	\$148.44
70	18.3	7.09	57	4.03	2.9	16	107	8.47	4.75	62.5	1.25	\$78.57	\$124.23	\$202.80	\$163.10
73	19.9	6.94	53	3.70	3.1	15	107	8.56	4.50	66.3	1.33	\$63.69	\$131.84	\$195.53	\$147.54
74	20.1	6.86	56	3.88	3.2	16	107	8.23	4.59	66.4	1.33	\$63.77	\$132.15	\$195.92	\$147.73
75	18.0	7.19	55	3.98	2.7	15	113	8.72	4.77	61.5	1.23	\$80.78	\$122.31	\$203.08	\$165.15
76	16.4	4.55	62	2.84	2.7	16	102	5.93	3.69	58.0	1.16	\$73.97	\$115.38	\$189.35	\$163.41
Average	18.6	6.52	57	3.71	3.0	16	106	7.92	4.46	61.1	1.22	\$72.36	\$121.50	\$193.85	\$159.67

Table 6b – Winter drop 2026 shearing deviations

Team	FD	GFW	Sch Yld	CFW	SD	CV	SL	GWW	CWW	Adj LWT	DSE	TFV	CWTV	TSV	TSV DSE
2	-1.1	87%	0.8	88%	-0.1	0.3	-2.4	90%	91%	98%	-0.03	\$0.64	\$-2.86	\$-2.23	\$1.54
7	-0.4	100%	-0.7	98%	-0.1	-0.1	1.0	97%	95%	98%	-0.02	\$-2.25	\$-2.28	\$-4.53	\$-1.22
9	1.0	108%	1.8	111%	0.2	0.1	3.0	106%	110%	108%	0.10	\$-1.76	\$9.55	\$7.79	\$-5.81
16	-1.6	78%	8.2	89%	-0.3	0.1	-1.4	82%	95%	100%	0.00	\$6.62	\$-0.27	\$6.36	\$5.14
17	-1.8	74%	6.6	83%	-0.1	1.4	-4.3	78%	88%	87%	-0.16	\$2.04	\$-15.39	\$-13.36	\$10.41
19	-1.1	100%	-1.3	98%	-0.3	-0.8	0.1	99%	96%	104%	0.05	\$4.95	\$5.19	\$10.14	\$0.87
21	-0.6	75%	4.5	81%	0.1	1.1	-5.2	79%	87%	100%	0.01	\$-6.83	\$0.59	\$-6.24	\$-6.62
22	0.6	104%	0.1	105%	0.1	-0.3	-0.7	105%	105%	109%	0.11	\$-1.88	\$11.14	\$9.26	\$-6.85
23	-0.8	106%	3.2	112%	-0.1	-0.1	-3.3	102%	108%	101%	0.01	\$11.47	\$0.63	\$12.10	\$8.74
25	-1.4	118%	0.7	120%	0.0	1.6	-1.4	118%	121%	102%	0.03	\$26.20	\$2.56	\$28.77	\$19.00

Team	FD	GFW	Sch Yld	CFW	SD	CV	SL	GWW	CWW	Adj LWT	DSE	TFV	CWTV	TSV	TSV DSE
26	-0.3	108%	-0.5	108%	0.2	1.2	0.7	103%	103%	100%	0.00	\$1.72	\$0.23	\$1.95	\$1.44
27	0.4	89%	-1.9	86%	-0.1	-1.1	7.7	91%	88%	107%	0.09	\$-11.53	\$8.94	\$-2.59	\$-13.54
29	-1.5	101%	4.3	109%	-0.4	-0.6	0.1	100%	107%	91%	-0.11	\$17.15	\$-10.87	\$6.28	\$20.97
33	1.3	113%	4.1	121%	0.2	0.0	0.5	108%	116%	101%	0.02	\$1.02	\$1.63	\$2.65	\$-0.60
36	0.1	107%	-2.0	104%	0.0	-0.3	-1.7	108%	104%	97%	-0.04	\$0.78	\$-3.68	\$-2.91	\$1.96
37	-0.6	103%	-4.4	94%	-0.2	-0.8	-1.3	100%	92%	94%	-0.07	\$-1.64	\$-7.16	\$-8.80	\$1.81
38	1.7	99%	-3.8	93%	0.5	1.0	-3.1	96%	91%	92%	-0.10	\$-15.89	\$-9.73	\$-25.62	\$-8.95
39	0.2	80%	-7.0	71%	0.0	-0.4	-1.0	83%	73%	103%	0.03	\$-23.16	\$3.08	\$-20.08	\$-20.77
46	-0.5	90%	-2.1	87%	-0.2	-0.9	-0.2	89%	85%	91%	-0.11	\$-8.54	\$-11.04	\$-19.58	\$-2.61
48	0.4	105%	-1.3	103%	0.0	-0.5	-3.1	103%	101%	86%	-0.17	\$-3.28	\$-16.59	\$-19.88	\$5.53
53	1.2	126%	3.3	133%	0.1	-0.4	0.1	124%	131%	105%	0.07	\$11.60	\$6.68	\$18.28	\$5.32
54	-0.9	116%	0.7	118%	-0.1	0.1	0.3	114%	116%	101%	0.01	\$17.50	\$0.64	\$18.13	\$13.97
56	-1.5	94%	-4.1	88%	-0.3	-0.1	1.5	94%	87%	87%	-0.16	\$-0.03	\$-15.51	\$-15.54	\$8.56
59	5.0	85%	-8.0	73%	1.5	2.8	-2.0	87%	74%	113%	0.16	\$-29.36	\$16.23	\$-13.12	\$-28.71
60	-0.7	116%	2.1	120%	-0.2	-0.6	4.3	115%	119%	99%	-0.01	\$19.11	\$-1.43	\$17.68	\$17.37
61	-0.2	107%	-1.0	105%	-0.1	-0.3	0.1	106%	104%	101%	0.01	\$2.89	\$0.77	\$3.66	\$1.50
63	1.9	114%	-1.8	110%	0.2	-0.5	2.2	112%	108%	105%	0.07	\$-5.98	\$6.54	\$0.56	\$-7.94
64	-0.5	112%	1.3	115%	-0.2	-0.6	0.1	113%	115%	92%	-0.10	\$13.58	\$-10.10	\$3.48	\$17.55
67	0.1	99%	-2.9	94%	0.0	0.1	-4.9	101%	96%	110%	0.12	\$-5.45	\$11.59	\$6.14	\$-9.60
68	0.2	91%	0.3	91%	-0.1	-0.8	7.9	98%	98%	97%	-0.04	\$-6.05	\$-3.53	\$-9.59	\$-2.91
69	1.4	99%	-1.1	97%	0.3	0.2	-0.3	95%	93%	98%	-0.03	\$-14.03	\$-2.74	\$-16.77	\$-11.13
70	-0.3	109%	-0.2	109%	-0.1	0.0	1.0	107%	107%	102%	0.02	\$6.17	\$2.45	\$8.62	\$3.53
73	1.4	107%	-3.8	100%	0.1	-0.7	0.5	108%	101%	108%	0.10	\$-8.72	\$10.06	\$1.35	\$-12.03
74	1.5	105%	-0.4	104%	0.2	-0.2	0.7	104%	103%	109%	0.10	\$-8.63	\$10.37	\$1.74	\$-11.84

Team	FD	GFW	Sch Yld	CFW	SD	CV	SL	GWW	CWW	Adj LWT	DSE	TFV	CWTV	TSV	TSV DSE
75	-0.5	110%	-1.9	107%	-0.3	-1.0	7.2	110%	107%	100%	0.01	\$8.37	\$0.53	\$8.90	\$5.58
76	-2.1	70%	5.5	77%	-0.3	0.3	-4.3	75%	83%	95%	-0.06	\$1.57	\$-6.40	\$-4.83	\$3.84
Average	18.6	6.52	57	3.71	3.0	16	106	7.92	4.46	61.1	1.22	\$72.36	\$121.50	\$193.85	\$159.67

Table 7a – Spring drop 2026 shearing averages

Team	FD	GFW	Sch Yld	CFW	SD	CV	SL	GWW	CWW	Adj LWT	DSE	TFV	CWTV	TSV	TSV DSE
1	16.3	4.81	65	3.15	2.5	16	101	5.86	3.83	55.4	1.11	\$78.88	\$110.26	\$189.14	\$170.66
4	16.5	4.25	60	2.52	2.5	15	97	5.29	3.11	51.8	1.04	\$63.54	\$102.98	\$166.52	\$161.27
5	17.0	6.47	61	3.90	2.7	16	106	8.18	4.89	51.1	1.02	\$89.94	\$101.64	\$191.58	\$187.92
6	16.4	4.93	63	3.10	2.6	16	102	6.35	3.98	56.9	1.14	\$78.09	\$113.15	\$191.24	\$168.79
8	16.4	5.77	59	3.40	2.7	17	105	7.30	4.27	47.2	0.95	\$84.17	\$93.96	\$178.13	\$189.27
10	17.2	6.01	60	3.56	2.8	16	104	7.54	4.43	58.7	1.17	\$81.91	\$116.84	\$198.74	\$169.85
11	17.8	5.65	59	3.29	2.8	16	106	7.10	4.11	52.4	1.05	\$70.67	\$104.25	\$174.92	\$167.84
13	18.1	6.26	55	3.44	2.8	16	108	7.37	4.01	57.8	1.16	\$66.83	\$115.05	\$181.88	\$157.61
14	17.5	7.33	62	4.54	2.8	16	107	8.75	5.36	58.8	1.18	\$94.35	\$116.93	\$211.27	\$181.38
15	18.1	6.95	56	3.85	2.7	15	111	8.23	4.51	71.0	1.42	\$74.67	\$141.15	\$215.82	\$152.59
20	18.2	5.23	65	3.39	3.1	17	102	6.45	4.18	60.5	1.21	\$69.44	\$120.31	\$189.74	\$157.29
28	17.9	6.65	57	3.82	2.7	15	107	8.28	4.68	54.4	1.09	\$79.02	\$108.14	\$187.16	\$173.59
31	19.4	6.96	55	3.81	3.1	16	108	8.45	4.57	66.0	1.32	\$67.03	\$131.37	\$198.39	\$150.64
35	17.9	7.70	60	4.63	2.8	16	105	9.36	5.56	64.8	1.30	\$96.10	\$128.87	\$224.97	\$174.68
40	16.8	4.81	63	3.06	2.7	16	102	6.10	3.87	63.9	1.28	\$74.26	\$127.10	\$201.35	\$157.91
41	17.5	4.71	69	3.25	2.8	16	102	6.11	4.21	65.2	1.30	\$72.10	\$129.72	\$201.82	\$154.87
42	15.6	3.95	65	2.58	2.5	16	93	4.84	3.16	50.0	1.00	\$72.85	\$99.41	\$172.26	\$173.56
43	18.4	3.96	63	2.51	2.9	16	103	5.05	3.20	60.8	1.21	\$51.29	\$120.84	\$172.13	\$142.02
44	16.8	4.66	65	3.01	2.6	16	97	5.64	3.63	60.0	1.20	\$70.53	\$119.44	\$189.97	\$158.67
45	16.7	4.90	62	3.02	2.9	17	97	6.16	3.79	55.2	1.10	\$72.80	\$109.79	\$182.59	\$165.88
47	18.6	6.35	55	3.49	2.8	15	118	7.55	4.10	65.9	1.32	\$63.80	\$131.17	\$194.96	\$148.36

Team	FD	GFW	Sch Yld	CFW	SD	CV	SL	GWW	CWW	Adj LWT	DSE	TFV	CWTV	TSV	TSV DSE
50	17.4	7.09	59	4.18	2.8	16	102	8.55	4.98	53.1	1.06	\$90.26	\$105.60	\$195.86	\$185.99
51	18.5	6.21	52	3.27	2.8	15	107	7.46	3.87	66.0	1.32	\$61.82	\$131.22	\$193.04	\$146.67
52	17.6	6.75	57	3.84	2.8	16	106	8.16	4.58	57.1	1.14	\$80.03	\$113.63	\$193.66	\$171.32
55	18.4	5.94	51	3.05	2.9	16	101	7.26	3.67	61.7	1.24	\$59.86	\$122.79	\$182.66	\$148.39
57	17.2	5.41	55	3.01	2.6	15	106	6.69	3.67	46.3	0.92	\$66.04	\$92.10	\$158.15	\$171.52
62	17.9	6.84	57	3.90	2.9	16	106	8.33	4.69	60.9	1.22	\$78.69	\$121.17	\$199.87	\$164.66
71	18.9	6.05	54	3.32	2.8	15	111	7.39	4.00	59.6	1.19	\$60.40	\$118.49	\$178.89	\$150.38
77	16.9	6.76	58	3.90	2.5	15	107	8.01	4.57	58.5	1.17	\$86.12	\$116.27	\$202.39	\$173.92
79	19.0	6.87	57	3.91	3.0	16	105	8.28	4.65	59.6	1.19	\$71.12	\$118.45	\$189.57	\$160.33
Average	17.6	5.87	59	3.46	2.8	16	104	7.20	4.20	58.4	1.17	\$74.22	\$116.07	\$190.29	\$164.59

Table 7b – Spring drop 2026 shearing deviations

Team	FD	GFW	Sch Yld	CFW	SD	CV	SL	GWW	CWW	Adj LWT	DSE	TFV	CWTV	TSV	TSV DSE
1	-1.2	82%	6.0	91%	-0.2	-0.2	-3.2	81%	91%	96%	-0.04	\$3.97	\$-4.51	\$-0.54	\$4.70
4	-1.0	72%	0.7	73%	-0.2	-0.4	-7.1	73%	74%	90%	-0.12	\$-11.37	\$-11.79	\$-23.16	\$-4.69
5	-0.5	110%	1.4	113%	-0.1	-0.1	1.4	113%	116%	89%	-0.13	\$15.03	\$-13.12	\$1.91	\$21.96
6	-1.1	84%	3.4	90%	-0.2	0.1	-2.1	88%	94%	99%	-0.02	\$3.18	\$-1.62	\$1.56	\$2.83
8	-1.1	98%	-0.2	99%	0.0	0.8	1.0	101%	101%	82%	-0.21	\$9.26	\$-20.81	\$-11.55	\$23.30
10	-0.3	103%	0.4	103%	0.1	0.7	-0.8	105%	105%	102%	0.02	\$7.00	\$2.07	\$9.07	\$3.88
11	0.3	96%	-0.4	95%	0.0	-0.1	2.1	98%	98%	91%	-0.11	\$-4.24	\$-10.52	\$-14.75	\$1.87
13	0.6	107%	-4.4	100%	0.1	-0.2	3.1	102%	95%	100%	0.00	\$-8.08	\$0.28	\$-7.79	\$-8.35
14	0.0	125%	2.2	132%	0.0	0.0	2.9	121%	127%	102%	0.02	\$19.44	\$2.16	\$21.60	\$15.42
15	0.6	119%	-3.8	112%	0.0	-0.6	6.6	114%	107%	123%	0.27	\$-0.24	\$26.39	\$26.14	\$-13.38
20	0.7	89%	5.6	98%	0.3	1.3	-2.4	89%	99%	105%	0.06	\$-5.47	\$5.54	\$0.07	\$-8.67
28	0.4	114%	-2.0	111%	-0.1	-0.8	2.5	115%	111%	94%	-0.07	\$4.11	\$-6.63	\$-2.51	\$7.62
31	1.9	119%	-4.6	111%	0.3	-0.1	3.2	117%	108%	114%	0.17	\$-7.88	\$16.60	\$8.72	\$-15.33
35	0.4	131%	0.5	134%	0.0	-0.1	1.0	130%	132%	112%	0.14	\$21.19	\$14.11	\$35.30	\$8.71
40	-0.7	82%	4.2	89%	-0.1	0.3	-2.6	85%	92%	111%	0.12	\$-0.65	\$12.33	\$11.68	\$-8.06

Team	FD	GFW	Sch Yld	CFW	SD	CV	SL	GWV	CWW	Adj LWT	DSE	TFV	CWTV	TSV	TSV DSE
41	0.0	80%	9.4	94%	0.1	0.4	-2.4	85%	100%	113%	0.15	\$-2.81	\$14.96	\$12.15	\$-11.10
42	-1.9	67%	5.8	75%	-0.3	0.2	-11.6	67%	75%	87%	-0.16	\$-2.06	\$-15.36	\$-17.42	\$7.59
43	0.9	68%	4.0	73%	0.1	-0.3	-1.8	70%	76%	105%	0.06	\$-23.62	\$6.07	\$-17.55	\$-23.94
44	-0.7	79%	5.2	87%	-0.1	-0.1	-7.5	78%	86%	104%	0.05	\$-4.37	\$4.67	\$0.30	\$-7.29
45	-0.8	84%	2.4	88%	0.1	1.4	-7.3	85%	90%	96%	-0.05	\$-2.11	\$-4.97	\$-7.09	\$-0.09
47	1.1	108%	-4.5	101%	0.0	-0.9	13.6	105%	97%	114%	0.16	\$-11.11	\$16.40	\$5.29	\$-17.61
50	-0.1	121%	-0.7	121%	0.1	0.4	-1.9	119%	118%	92%	-0.09	\$15.35	\$-9.17	\$6.19	\$20.02
51	1.0	106%	-7.1	95%	0.1	-0.5	2.9	103%	92%	114%	0.16	\$-13.09	\$16.45	\$3.36	\$-19.29
52	0.1	115%	-2.4	111%	0.0	-0.2	1.6	113%	109%	99%	-0.01	\$5.12	\$-1.14	\$3.98	\$5.36
55	0.9	101%	-8.6	88%	0.1	0.0	-3.4	101%	87%	107%	0.08	\$-15.05	\$8.03	\$-7.02	\$-17.57
57	-0.3	92%	-3.9	87%	-0.2	-0.8	2.0	93%	87%	80%	-0.23	\$-8.87	\$-22.66	\$-31.53	\$5.56
62	0.4	117%	-2.1	113%	0.1	0.3	2.0	115%	111%	106%	0.07	\$3.78	\$6.41	\$10.19	\$-1.30
71	1.4	103%	-4.8	96%	0.0	-0.9	6.2	102%	95%	103%	0.04	\$-14.51	\$3.72	\$-10.79	\$-15.58
77	-0.6	115%	-1.7	113%	-0.2	-0.9	2.4	111%	108%	101%	0.02	\$11.21	\$1.50	\$12.71	\$7.96
79	1.5	117%	-2.5	113%	0.2	-0.1	0.6	115%	110%	103%	0.04	\$-3.79	\$3.68	\$-0.11	\$-5.63
Average	17.6	5.87	59	3.46	2.8	16	104	7.20	4.20	58.4	1.17	\$74.22	\$116.07	\$190.29	\$164.59



Riverina Wool Testers
Wagga Wagga

📍 12 Cheshire Street
Wagga Wagga NSW 2650
☎ 02 6925 1407
✉ rwt@wooltesters.com.au
🌐 www.wooltesters.com.au

HELPING YOU MAKE BETTER BREEDING DECISIONS.

**Make Your Sheep
More Profitable...**
Have your sheep tested!



Accredited Member of International Association
of Wool Textile Laboratories

SPECIALISING IN:

- ☑ **Laboratory Testing**
(Micron, Yield, Staple Strength & Staple Length)
- ☑ **Electronic Eartags & Equipment**
- ☑ **Rampower Indexes**
- ☑ **NLIS Eartags**



INDEPENDENT ADVICE FOR ALL SHEEP BREEDERS.....

- Stud & Commercial enterprises
- Breeding objectives, program design, selection, and classing
- Management advice on condition score, reproduction, lamb survival, nutrition & health
- Grazing systems, drought management & recovery
- Sheep Genetics service provider
- EID application and individual management
- Sheep industry R&D, Extension and Delivery
- LTEM, Weaners for Profit, T90, AWI/ MLA workshops

JIM MECKIFF
P: 0428 332 280
E: jamesmeckiff@gmail.com
www.jmlivestock.com.au



6 AMPT 2026 Results Summary Graphs

The following graphs present team average deviations for clean wool weight (fleece + skirtings) relative to fibre diameter, and wool value relative to meat value. Percent differences and deviations are calculated within each age group. The average wool and meat values reported inside the carcass value deviations graphs are the averages for the age group.

6.1 Autumn Drop

Figure 3 – Autumn drop 2026 Clean Wool Weight relative to Fibre Diameter

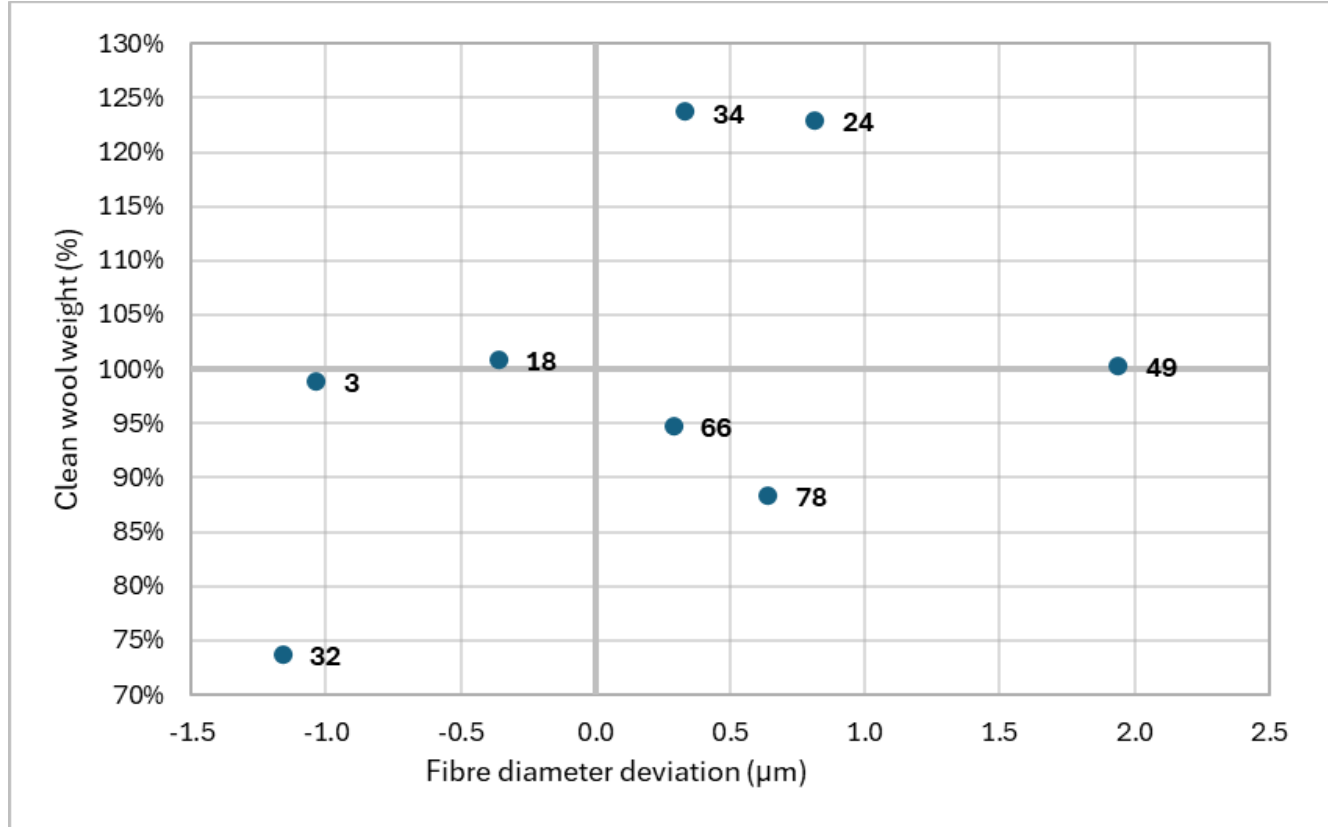


Figure 4 – Autumn drop 2026 Wool Value relative to Meat Value



6.2 Winter Drop

Figure 5 – Winter drop 2026 Clean Wool Weight relative to Fibre Diameter

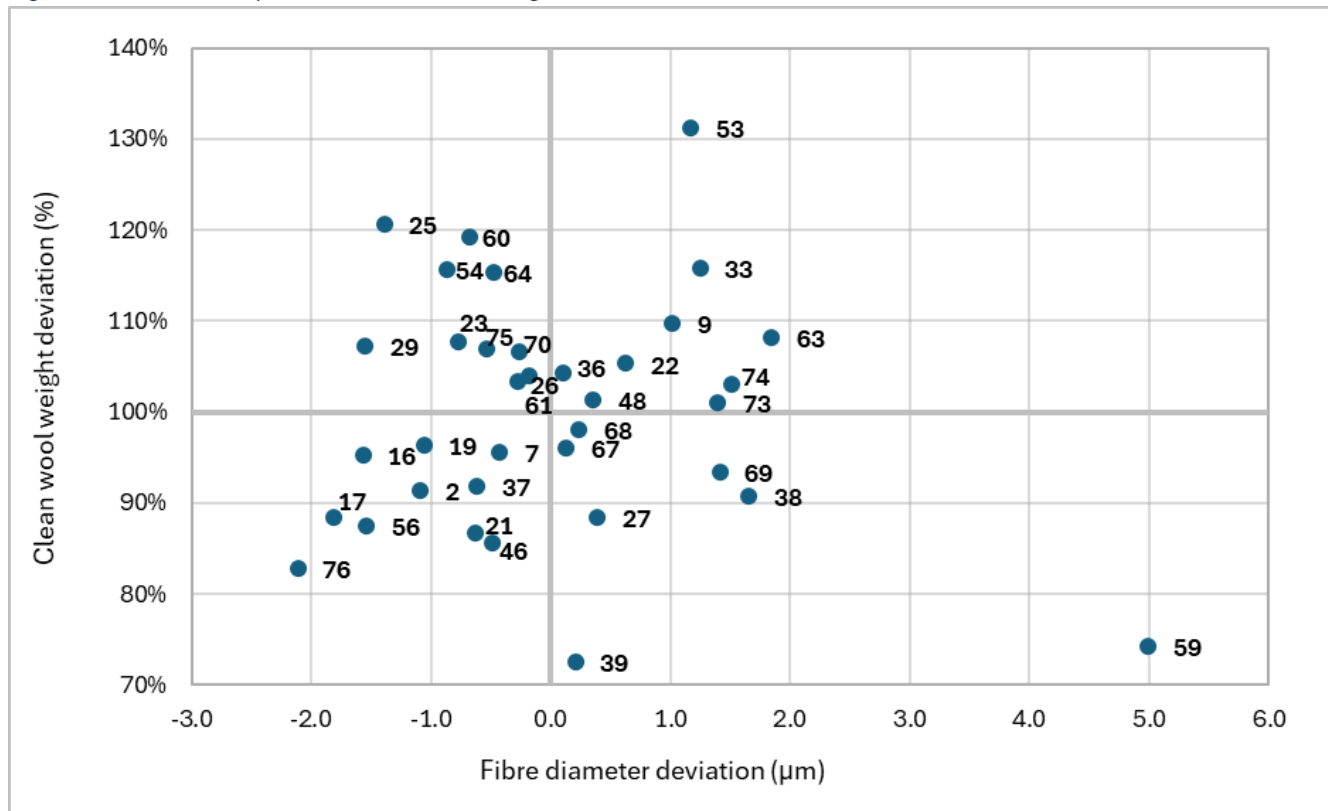
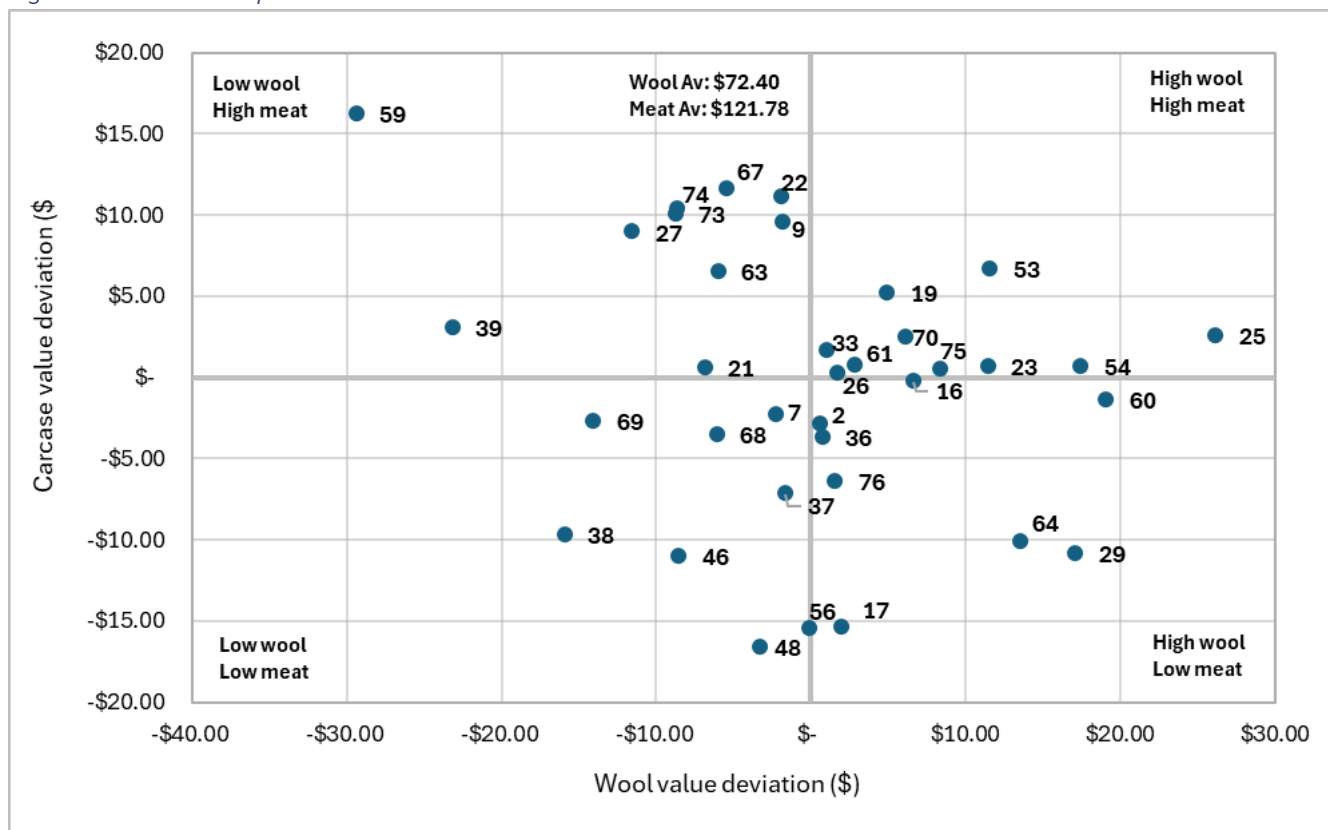


Figure 6 – Winter drop 2026 Wool Value relative to Meat Value



6.3 Spring Drop

Figure 7 – Spring drop 2026 Clean Wool Weight relative to Fibre Diameter

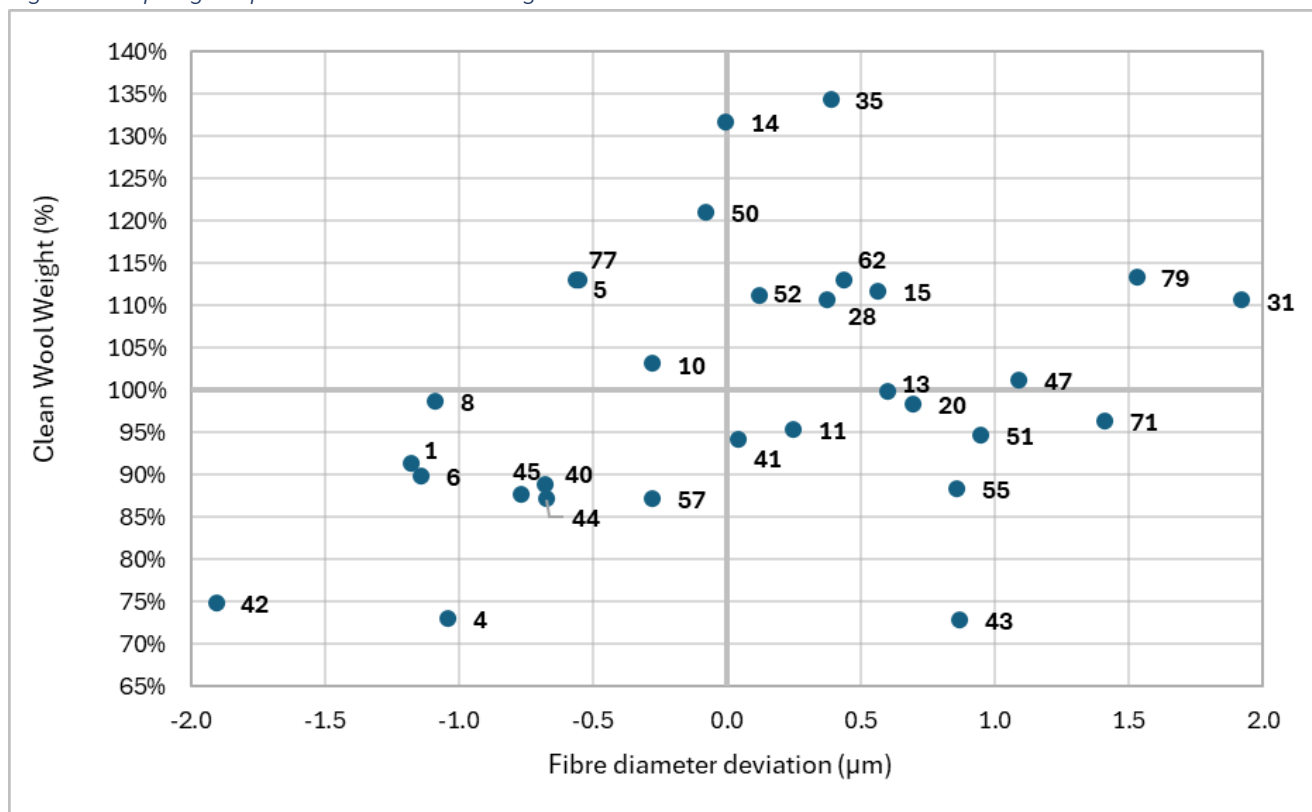


Figure 8 – Spring drop 2026 Wool Value relative to Meat Value

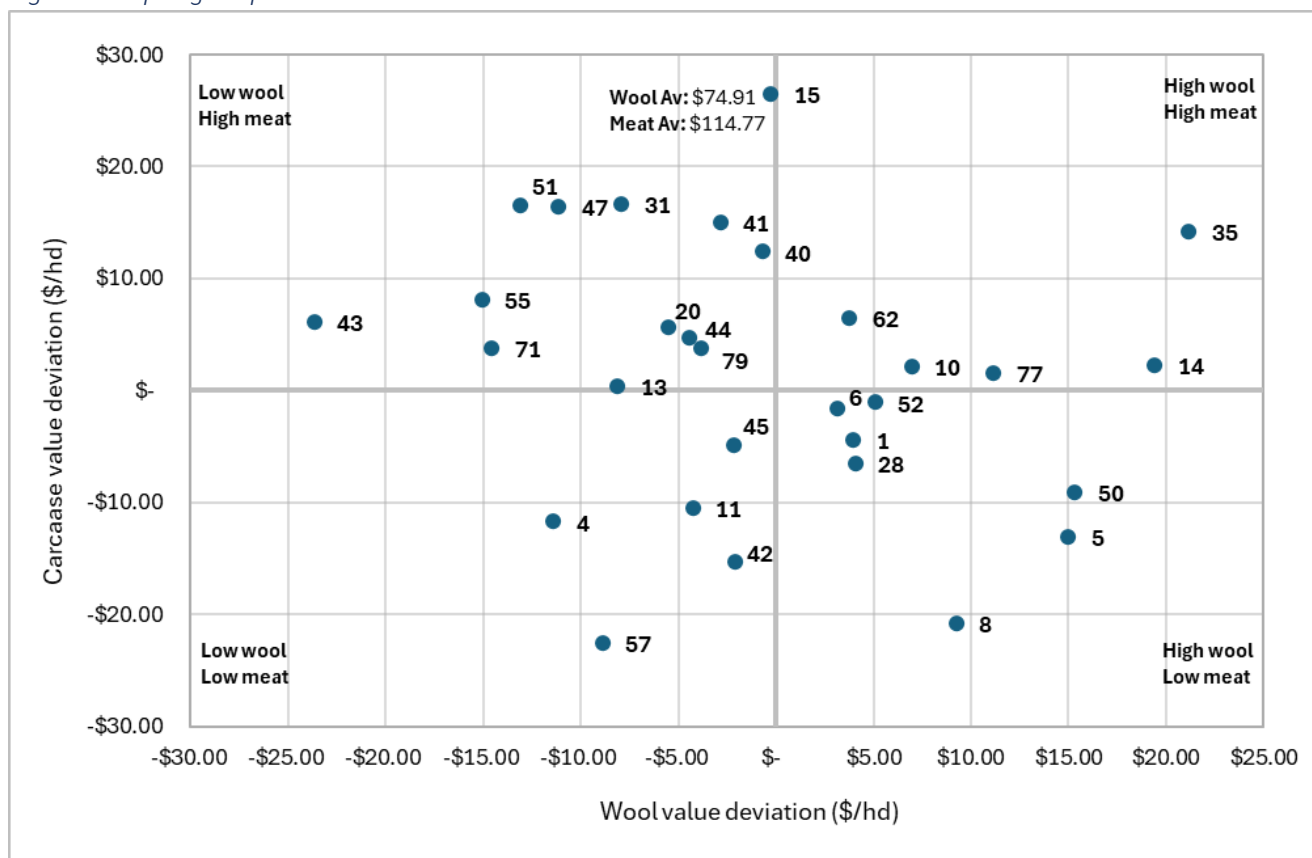


Figure 9 – Spring Drop Link Teams Ranked Across Sites – Total Fleece Value

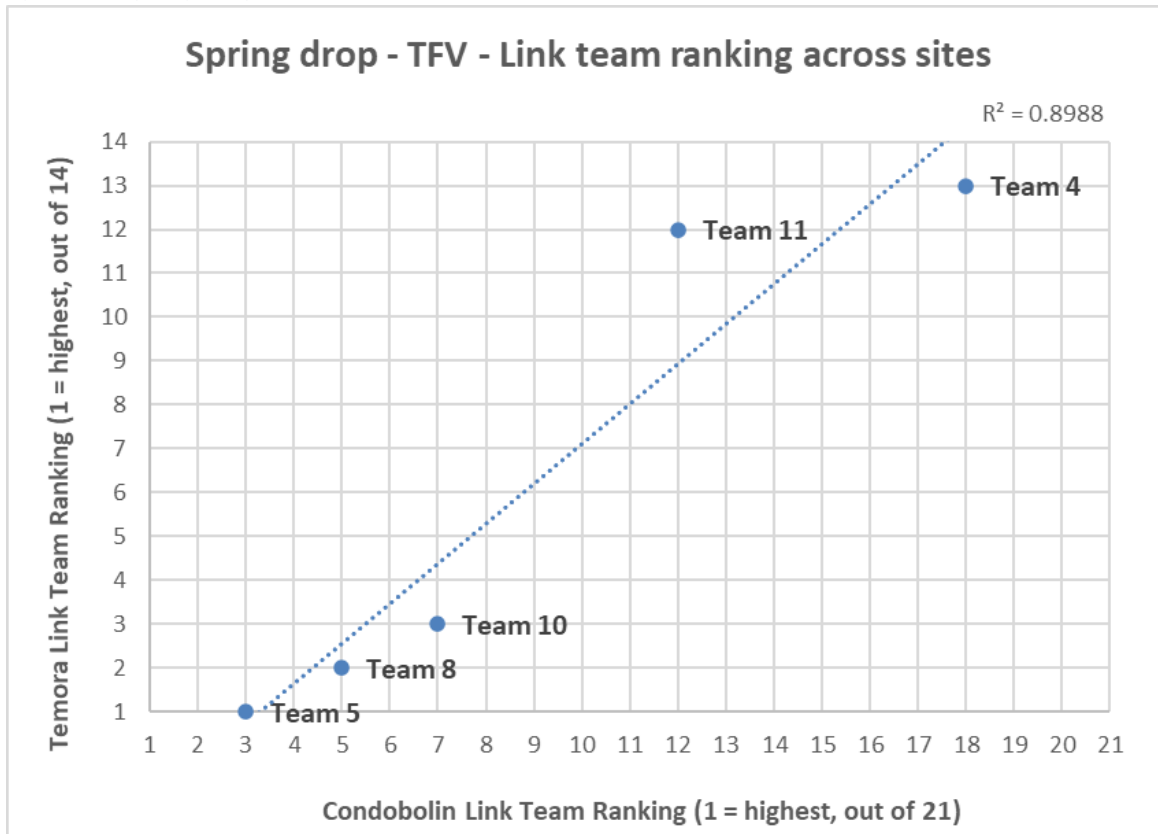
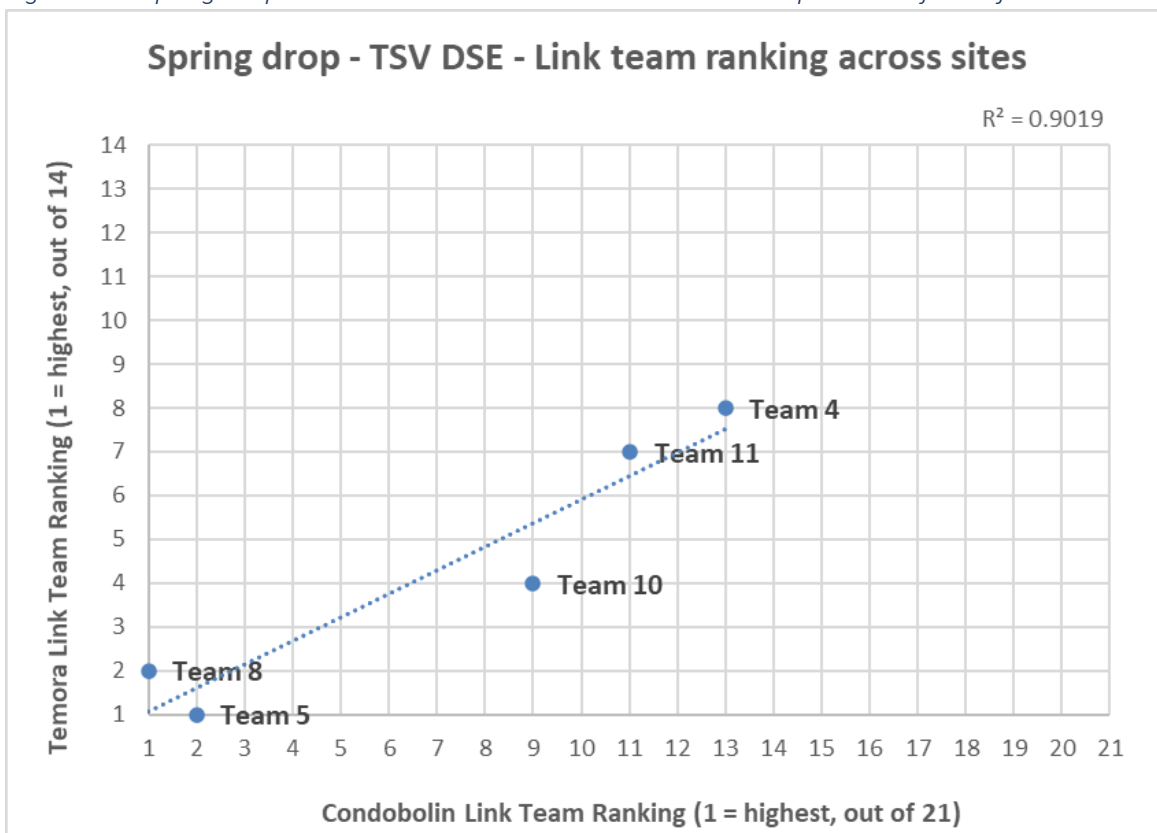


Figure 10 – Spring Drop Link Teams Ranked Across Sites – Total Sheep Value Adjusted for DSE



7.2 Comparison between the Wool and Meat Trial Wethers

74 teams have been entered in the AMPT, of the 74 teams, 66 teams participated in the Meat Trial (see [Section 2](#) for more details about the trial design). Figures 11, 12 and 13 show the correlations between the Wool and Meat Trial wethers for Body Weight, Micron and Staple Length. Each team had half their wethers allocated to the Wool and Meat Trials and the traits have been collected at different ages - the measurements for the Meat Trial were collected in early August 2025 and the Wool Trial wethers in early March 2026.

Figure 11 – Wool and Meat Trial Comparison – Body Weight (kg)

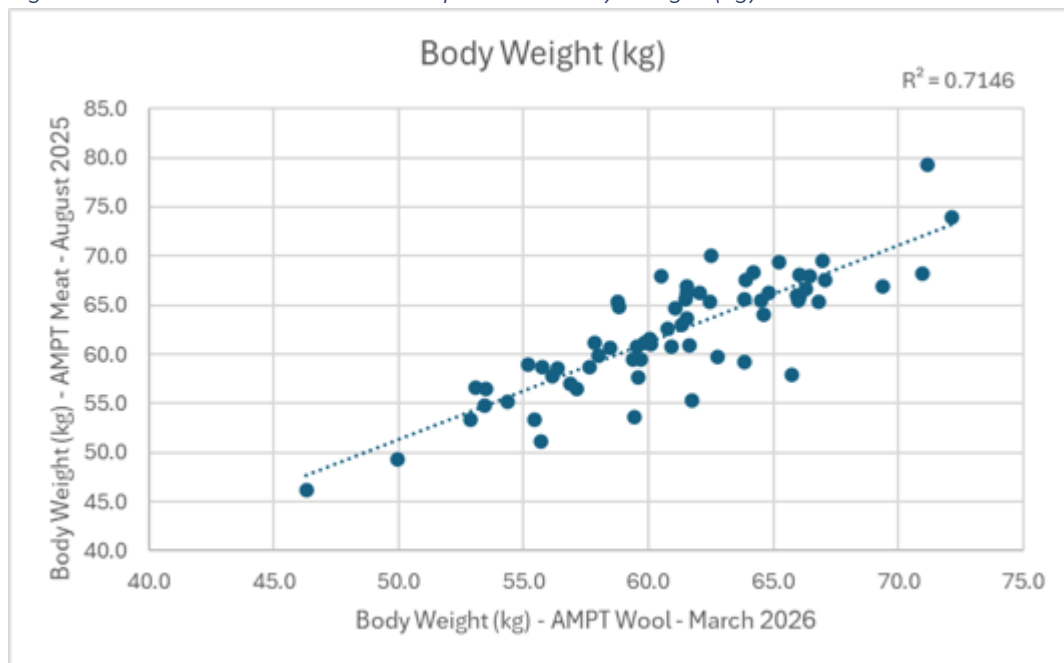


Figure 12 – Wool and Meat Trial Comparison – Staple Length (mm)

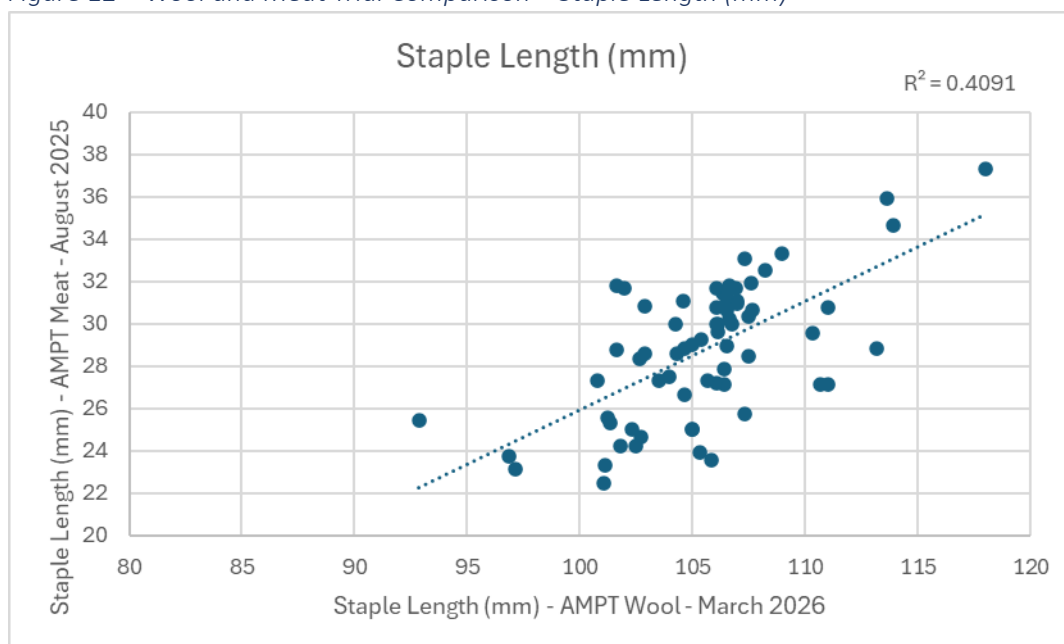
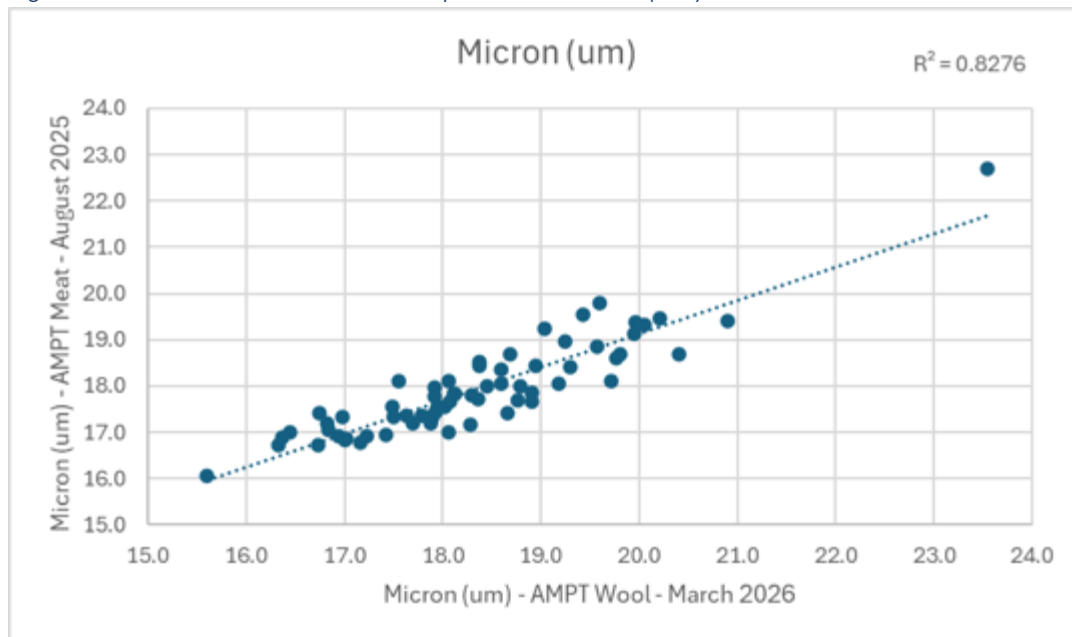


Figure 13 – Wool and Meat Trial Comparison – Micron (um)



KentishDowns Poll Dorsets

Wagga Wagga NSW
 Craig Wilson M: 0428 250 982 | Karen Wilson M: 0428 089 009
www.kentishdowns.com

Independent Breeding Advice and Services You Can Depend On

- Breeding program design
- Electronic identification systems
- Data collection processes
- On farm and off farm benchmarking
- Data management and analysis
- Provider of RAMPOWER Indexes
- Sheep Genetics MateSel Provider
- Educator and mentor to young industry leaders



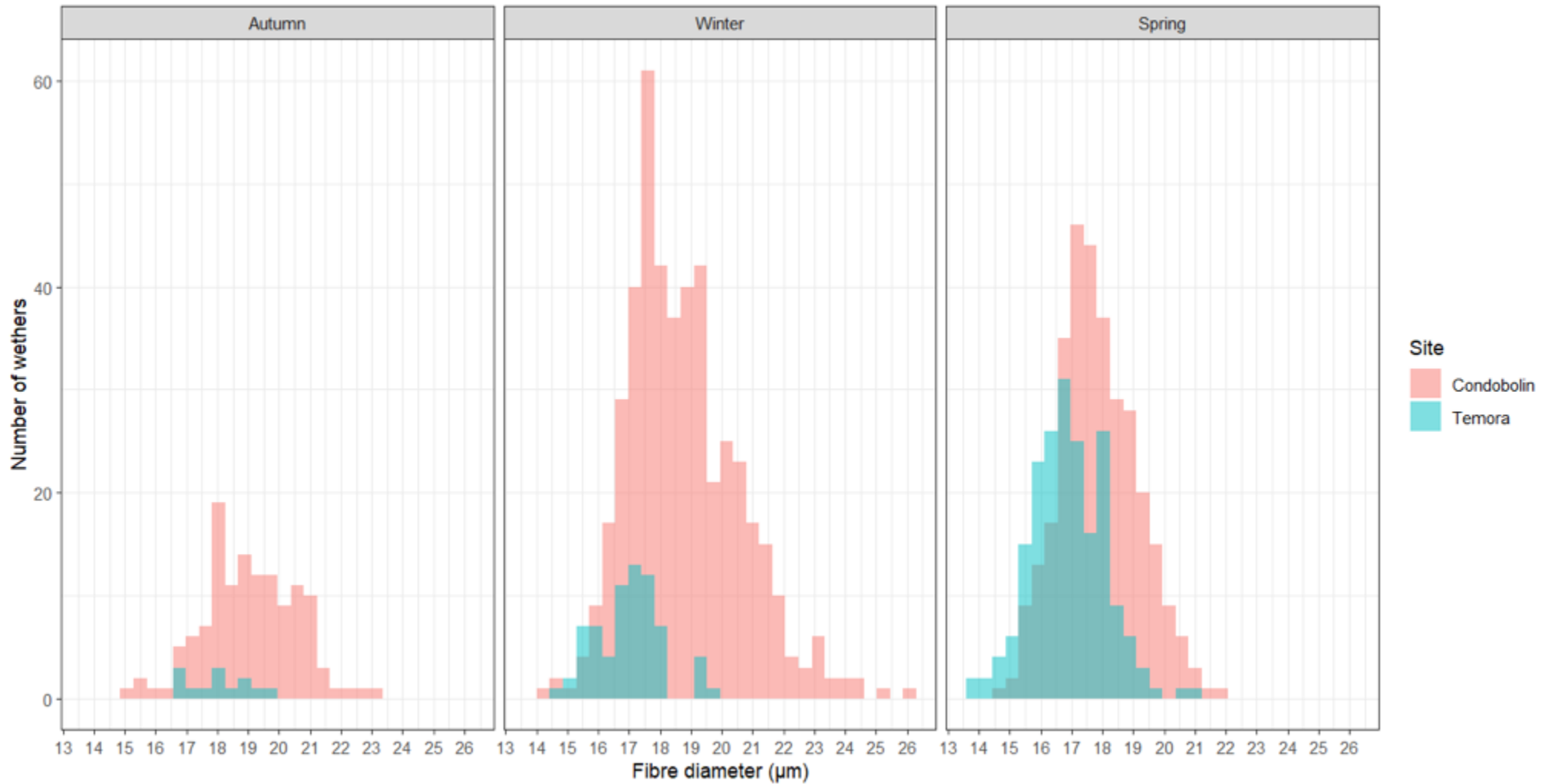
Contact Sally Martin on
 m: **0400 782 477**
 e: hello@sheepmetrix.com.au
 w: www.sheepmetrix.com.au



Distribution graphs across sites

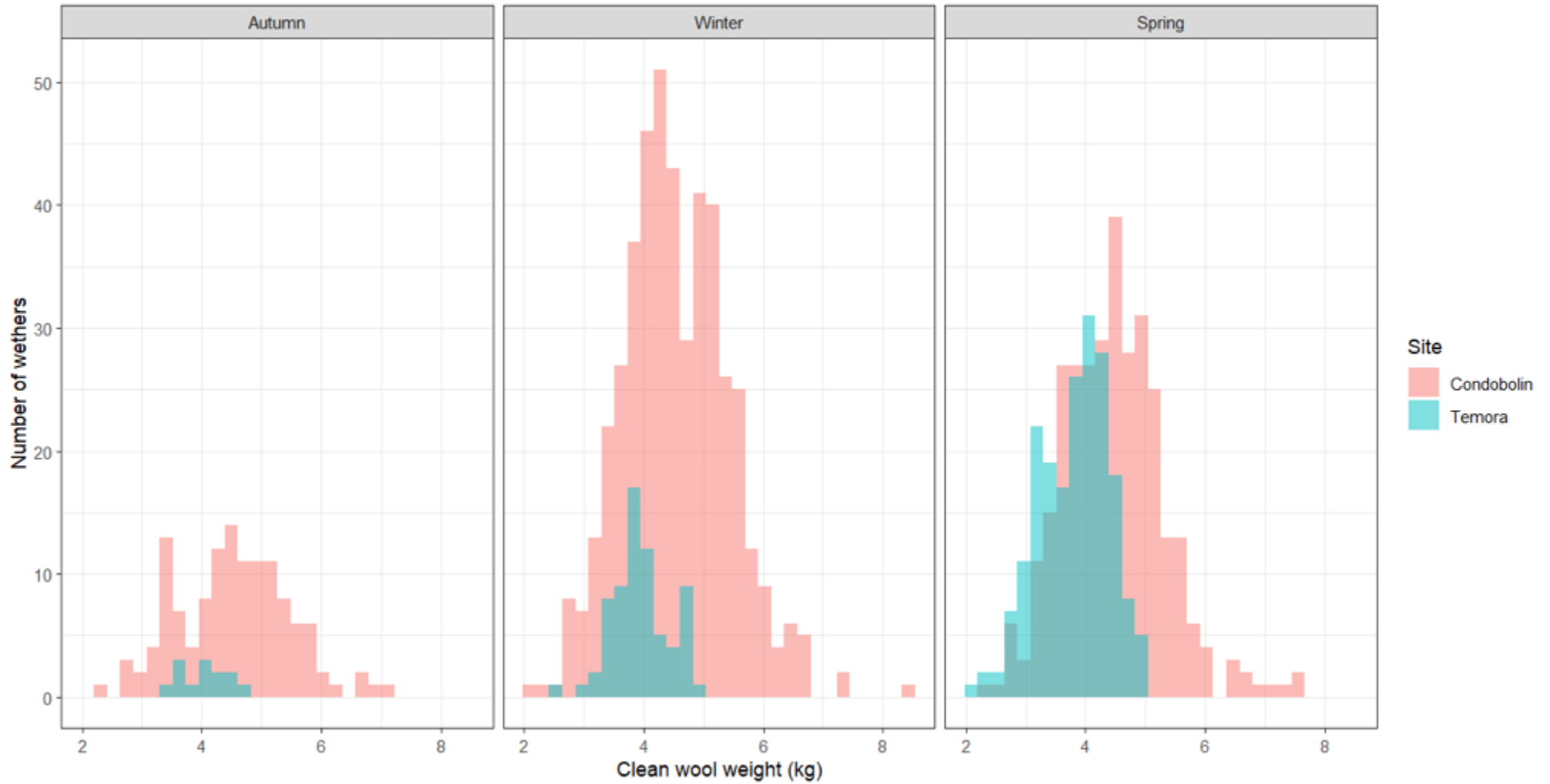
The distribution graphs presented in this section aim to show the range and variation within the two sites and across the age groups.

7.2.1 Fibre Diameter distribution across sites



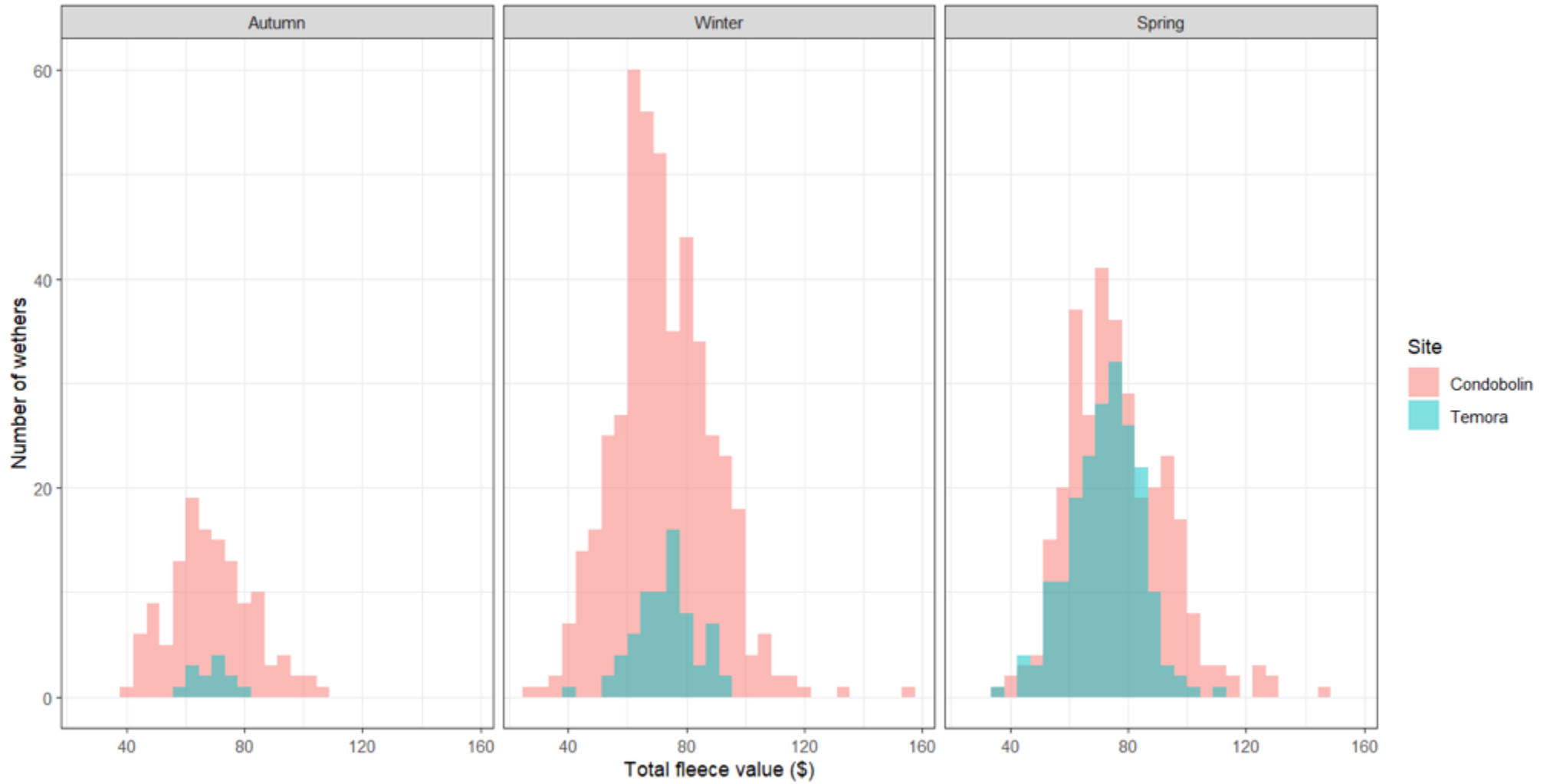
Source data = AMPT. Graphics by SheepMetriX

7.2.2 Clean Wool Weight distribution across sites



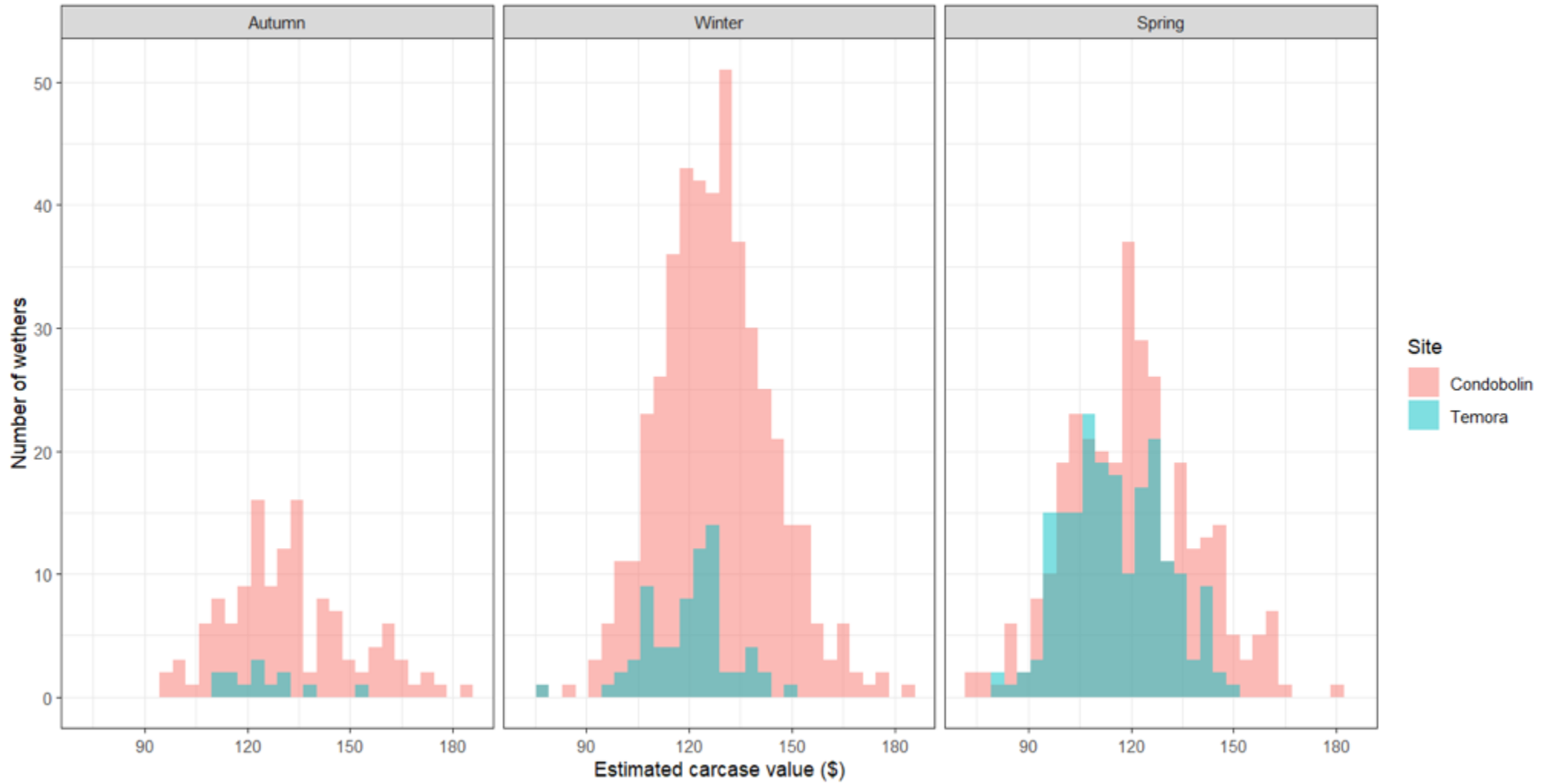
Source data = AMPT. Graphics by SheepMetriX

7.2.3 Total Fleece Value (TFV) distribution across sites



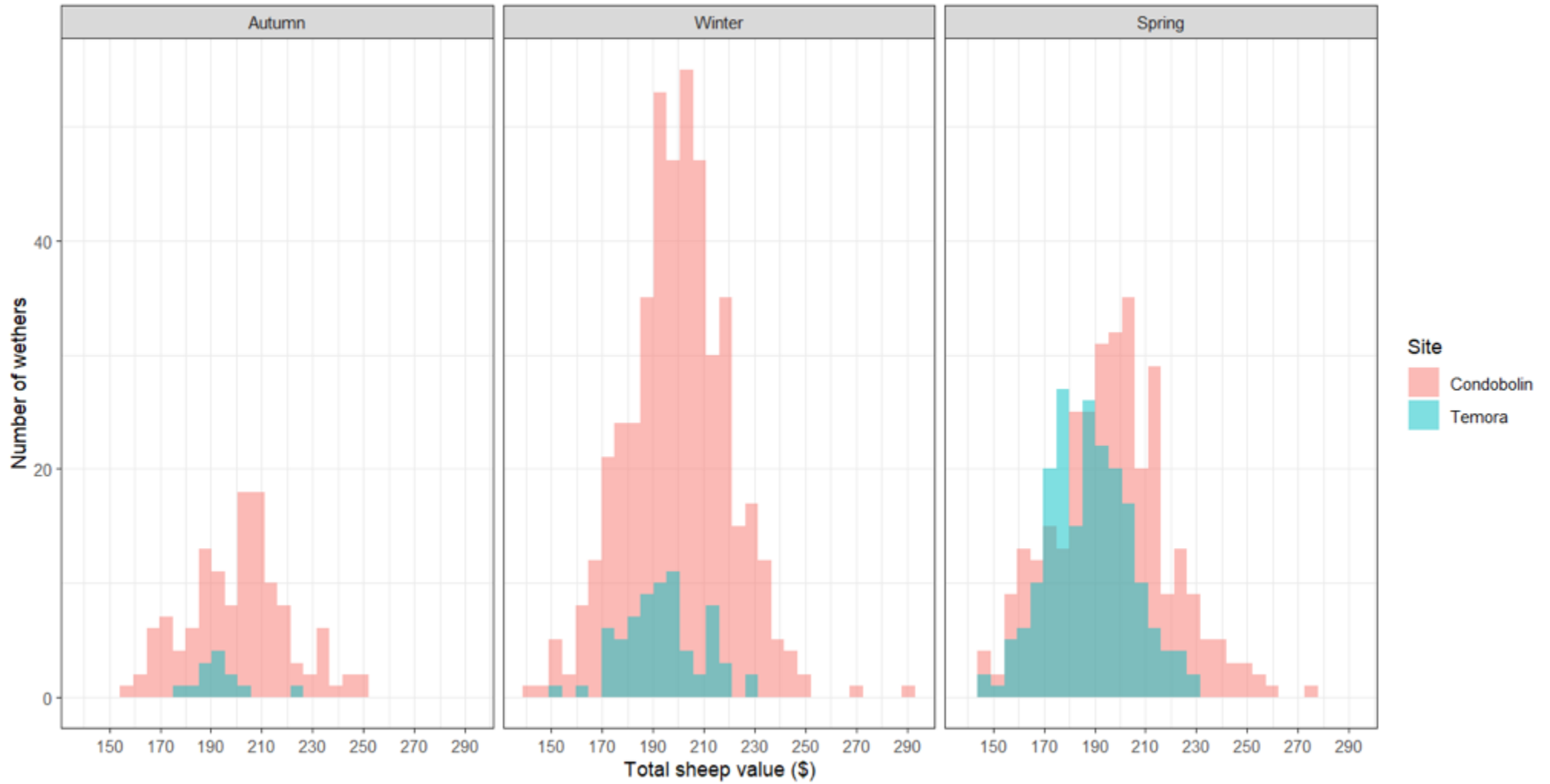
Source data = AMPT. Graphics by SheepMetriX

7.2.4 Estimated Carcase Value distribution across sites



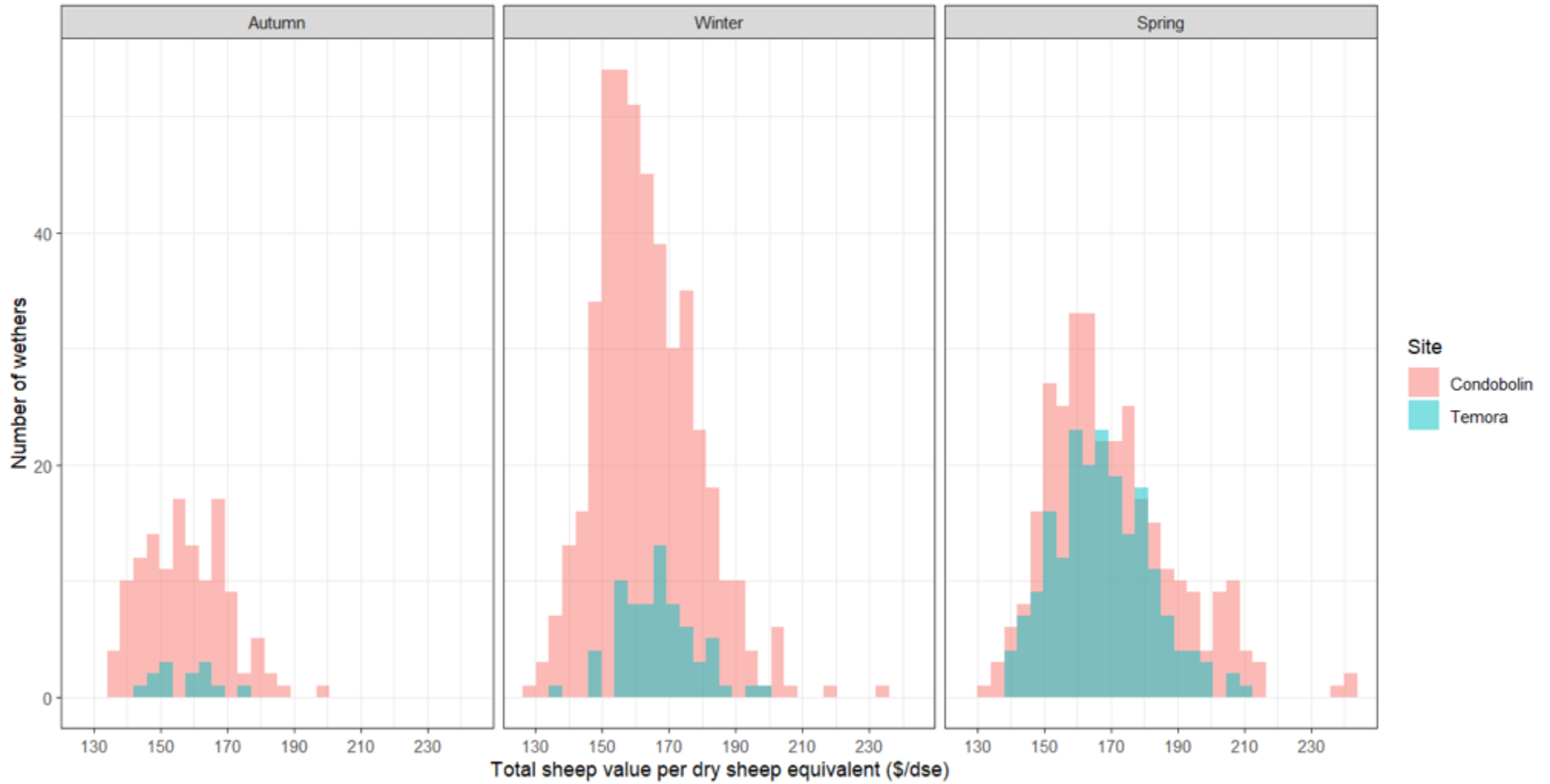
Source data = AMPT. Graphics by SheepMetriX

7.2.5 Total Sheep Value (TSV) distribution across sites



Source data = AMPT. Graphics by SheepMetriX

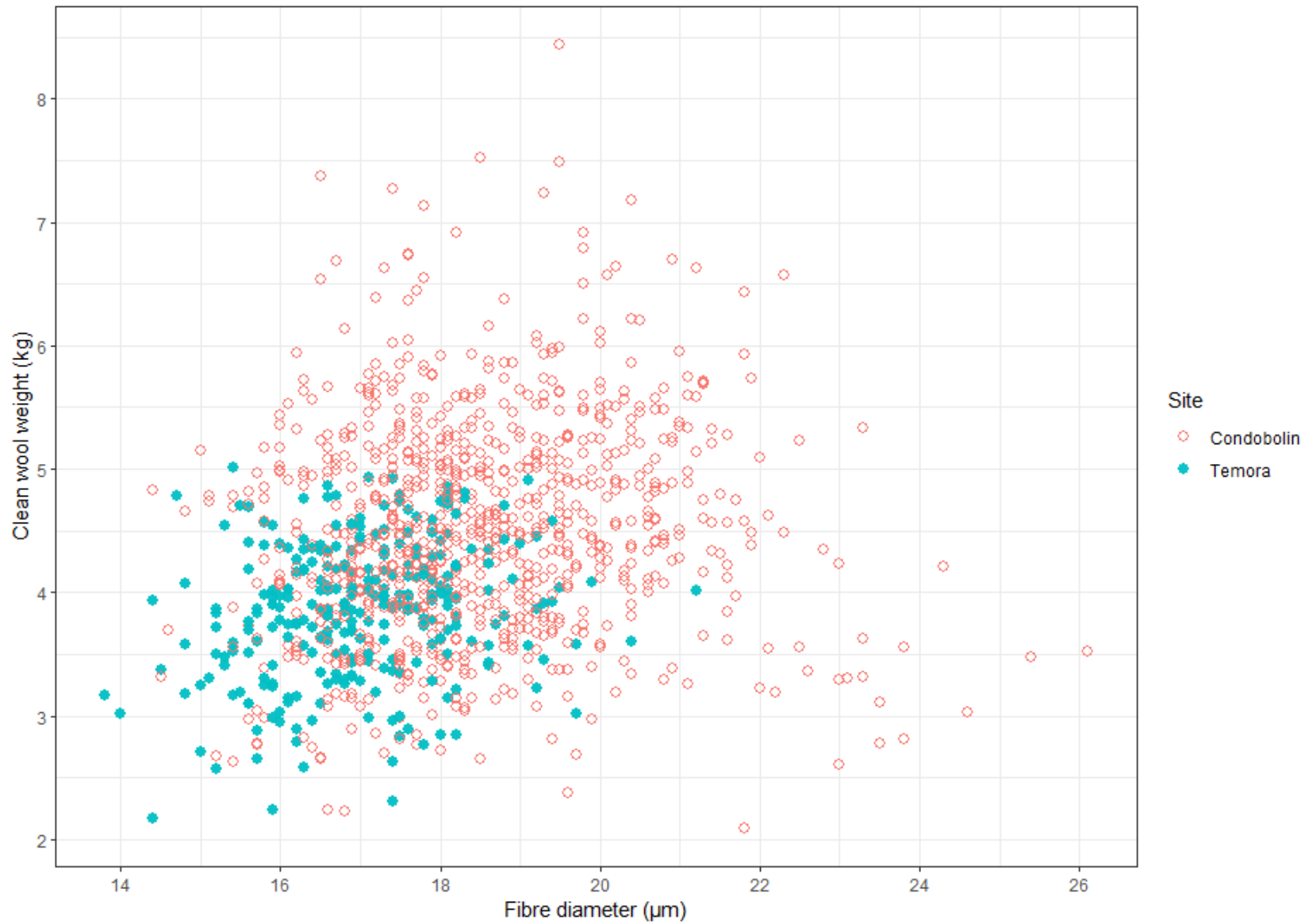
7.2.6 Total Sheep Value per Dry Sheep Equivalent (TSV DSE) distribution across sites



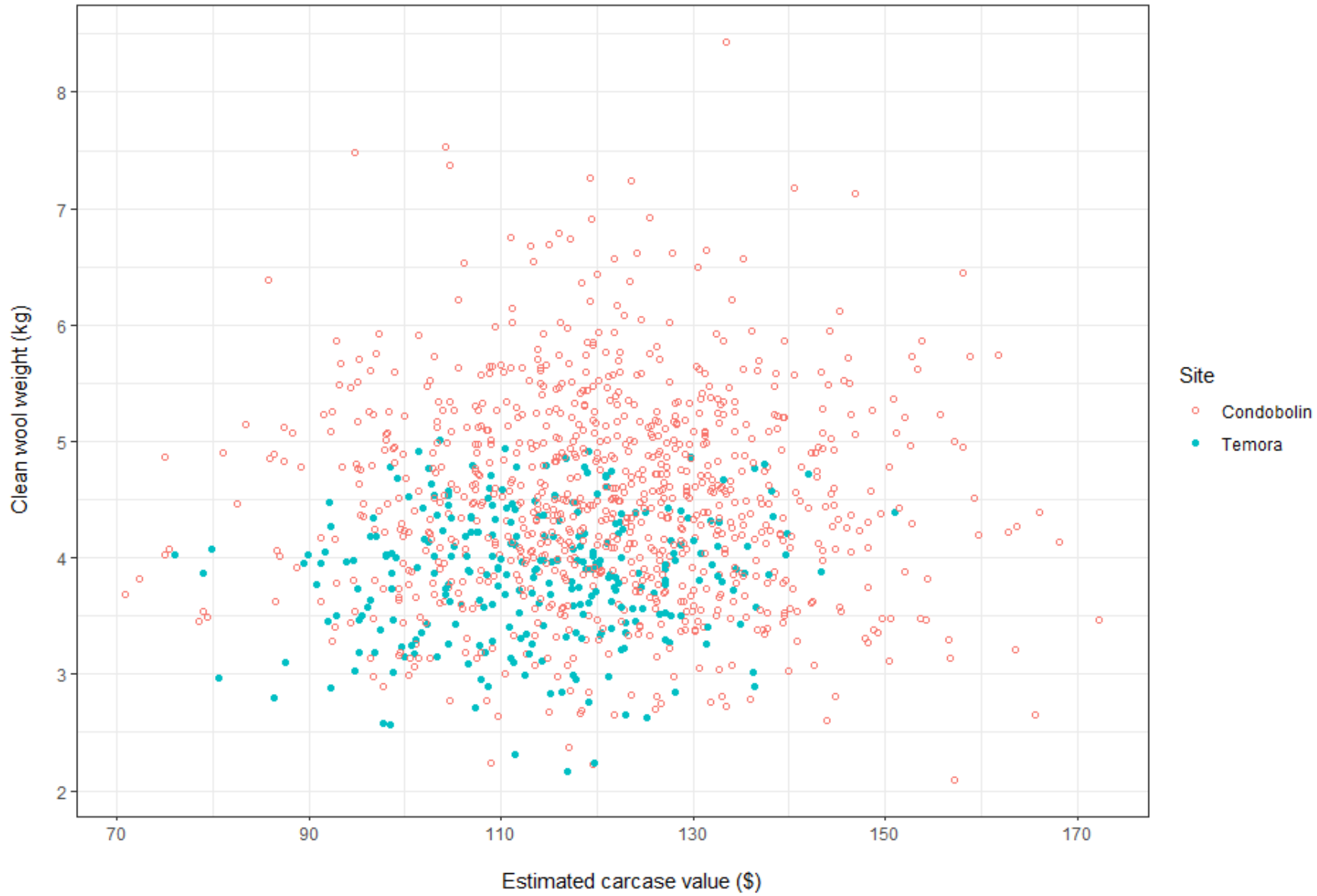
7.3 Basic Scatterplots comparing site and traits

The graphs presented in this section show the relationship between certain traits or values across the two sites for individual wethers.

7.3.1 Fibre Diameter and Clean Wool Weight (Individual)



7.3.2 Estimated Carcase Value and Clean Wool Weight (Individual)

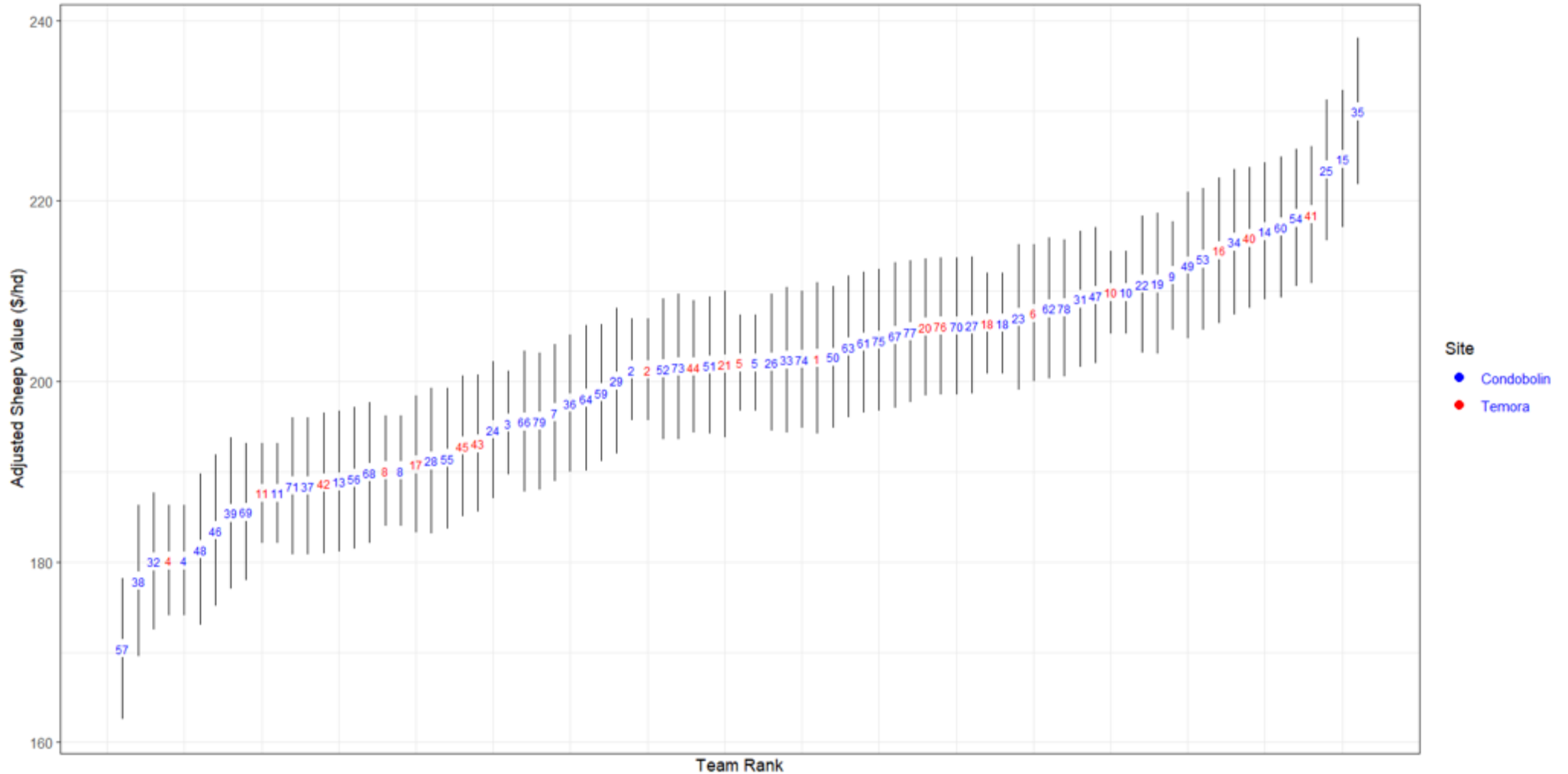


Source data = AMPT. Graphics by SheepMetriX

7.4 Rank of teams across sites, Adjusted for site and age group

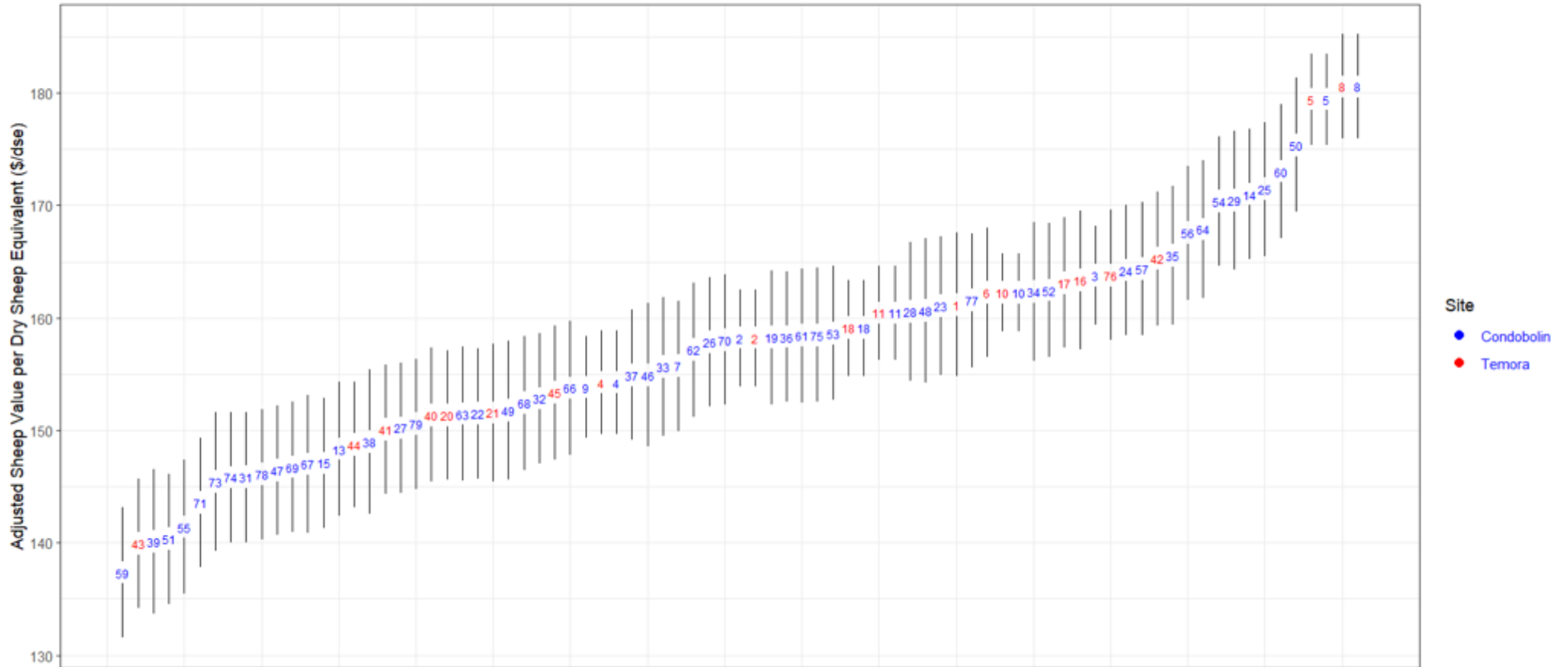
7.4.1 Total Sheep Value per head for each Team, adjusted for site and age group

The rank of teams from lowest to highest (Total Sheep Value (\$/Head) = Total Sheep Value + Estimated Carcase Value). The black vertical lines are 1 standard deviation around the average total sheep value for each team, the longer the line the greater the variation within the team. You will notice the link teams are listed twice and close together highlighting their ranking as outlined in [Section 6](#). The range in Total Sheep Value per Head is from \$170.39 to \$229.94 a 35% difference across the AMPT teams.



7.4.2 Total Sheep Value per DSE for each Team, Adjusted for site and age group

The re-ranking of teams is evident when we go from a **per head** basis to a **dry sheep equivalent (DSE)**. These results start to look for efficiencies in production systems where feed intake is generally higher for larger animals and production per DSE can be converted to per hectare under different carrying capacities. The range in Total Sheep Value per DSE is from \$137.36 to \$180.57, a 31% difference in profitability.



Source data: AMPT. Graphics by SheepMetriX



AUSTRALIAN MERINO *Production Trial*

EST. 2004

Are you interested in entering
the next Australian Merino Production Trial?

Click on the link below to
register your interest in the next trial
2027-2029

www.australianmerinoproductiontrial.com